

## Product datasheet for **TA385019S**

### Cyclophilin B (PPIB) Mouse Monoclonal Antibody [Clone ID: 6H1-10C4-1A2]

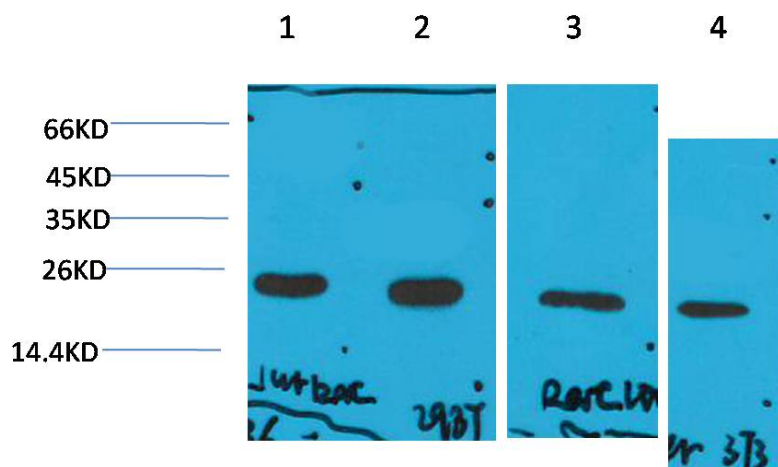
#### Product data:

Product Type:	Primary Antibodies
Clone Name:	6H1-10C4-1A2
Applications:	WB
Recommended Dilution:	WB: 1/1000-2000
Reactivity:	Human, Rat, Mouse
Host:	Mouse
Isotype:	IgG1
Clonality:	Monoclonal
Immunogen:	Synthetic peptide conjugated to KLH.
Formulation:	Liquid in PBS containing 50% glycerol, 0.5% BSA and 0.03% Proclin 300, pH 7.3.
Concentration:	lot specific
Purification:	Affinity Purified
Conjugation:	Unconjugated
Storage:	Store at 4°C short term. Aliquot and store at -20°C long term. Avoid freeze/thaw cycles.
Stability:	1 year
Predicted Protein Size:	21kDa
Gene Name:	peptidylprolyl isomerase B
Database Link:	<a href="#">Entrez Gene 5479 Human P23284</a>
Background:	Swiss-Prot Acc.P23284.PPIases accelerate the folding of proteins. It catalyzes the cis-trans isomerization of proline imidic peptide bonds in oligopeptides.
Synonyms:	CYP-S1; CYPB; MGC2224; MGC14109; OI9; PPIase; rotamase; S-cyclophilin; SCYLP

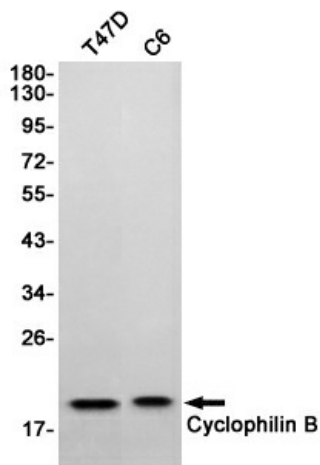


[View online »](#)

Product images:



Western blot analysis of 1) Jurkat, 2)293T, 3)Rat Liver Tissue, 4)3T3 with Cyclophilin B Mouse mAb diluted at 1:2,000.



Western blot detection of Cyclophilin B in T47D,C6 cell lysates using Cyclophilin B (6H1) Mouse mAb(1:1000 diluted).Predicted band size:21KDa.Observed band size:21KDa.