

Product datasheet for **TA385016**

PPAR alpha (PPARA) Rabbit Polyclonal Antibody

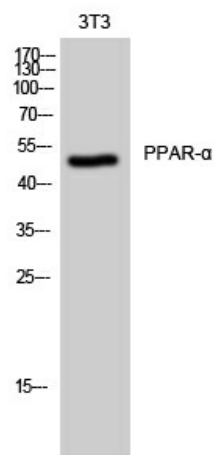
Product data:

| | |
|-------------------------|-----------------------------------------------------------------------------------------------------|
| Product Type: | Primary Antibodies |
| Applications: | ELISA, IF, IHC, WB |
| Recommended Dilution: | WB: 1/500-2000 IHC: 1/50-300 |
| Reactivity: | Human, Mouse, Rat |
| Host: | Rabbit |
| Isotype: | IgG |
| Clonality: | Polyclonal |
| Immunogen: | The antiserum was produced against synthesized peptide derived from human PPAR-alpha. AA range:6-55 |
| Formulation: | Liquid in PBS containing 50% glycerol, 0.5% BSA and 0.02% sodium azide, pH 7.3. |
| Concentration: | lot specific |
| Purification: | Affinity Purified |
| Conjugation: | Unconjugated |
| Storage: | Store at 4°C short term. Aliquot and store at -20°C long term. Avoid freeze/thaw cycles. |
| Stability: | 1 year |
| Predicted Protein Size: | Observed MW (kDa):52 |
| Gene Name: | peroxisome proliferator activated receptor alpha |
| Database Link: | Entrez Gene 5465 Human Q07869 |
| Background: | Swiss-Prot Acc.Q07869. |
| Synonyms: | hPPAR; MGC2237; MGC2452; NR1C1; OTTHUMP00000197740; OTTHUMP00000197741; PPAR; PPAR-alpha; PPARalpha |

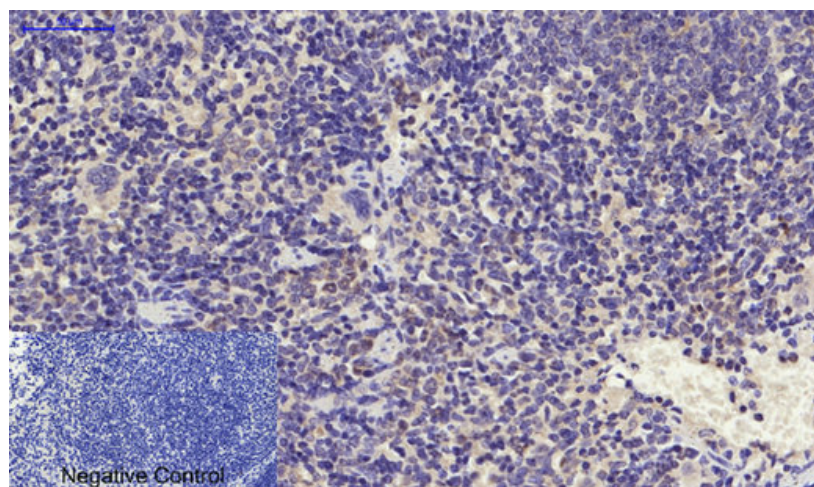


[View online »](#)

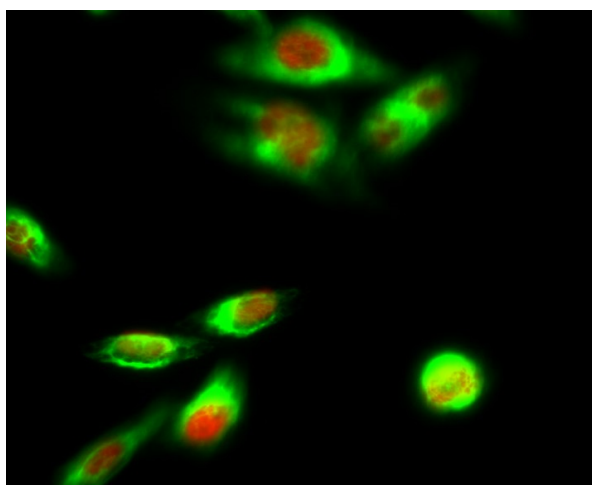
Product images:



Western blot analysis of PPAR alpha in 3T3 lysates using PPAR alpha antibody.



Immunohistochemistry analysis of paraffin-embedded mouse spleen tissue using PPARα antibody. High-pressure and temperature Sodium Citrate pH 6.0 was used for antigen retrieval.



Immunofluorescence analysis of PPAR alpha in HeLa cell using PPAR α antibody (red) and Galectin3 antibody (green)