

## Product datasheet for **TA385010S**

### Cytochrome P450 Reductase (POR) Rabbit Monoclonal Antibody [Clone ID: R05-9D4]

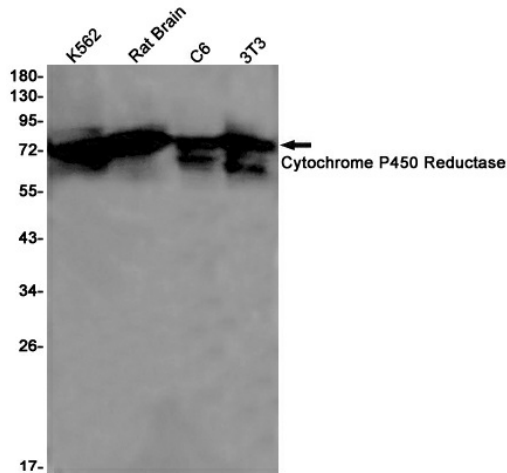
#### Product data:

Product Type:	Primary Antibodies
Clone Name:	R05-9D4
Applications:	IF, IHC, WB
Recommended Dilution:	WB: 1/2000-1/10000 IHC: 1/20 ICC/IF: 1/100
Reactivity:	Human, Mouse, Rat
Host:	Rabbit
Isotype:	IgG
Clonality:	Monoclonal
Immunogen:	A synthetic peptide of human Cytochrome P450 Reductase
Formulation:	50mM Tris-Glycine(pH 7.4), 0.15M NaCl, 40% Glycerol, 0.01% Sodium azide and 0.05% BSA
Concentration:	lot specific
Purification:	Affinity Purified
Conjugation:	Unconjugated
Storage:	Store at 4°C short term. Aliquot and store at -20°C long term. Avoid freeze/thaw cycles.
Stability:	1 year
Predicted Protein Size:	Calculated MW: 77 kDa; Observed MW: 77 kDa
Gene Name:	cytochrome p450 oxidoreductase
Database Link:	<a href="#">Entrez Gene 5447 Human P16435</a>
Background:	Swiss-Prot Acc.P16435.This enzyme is required for electron transfer from NADP to cytochrome P450 in microsomes. It can also provide electron transfer to heme oxygenase and cytochrome B5.
Synonyms:	CPR; CYPOR; DKFZp686G04235; FLJ26468; P450R

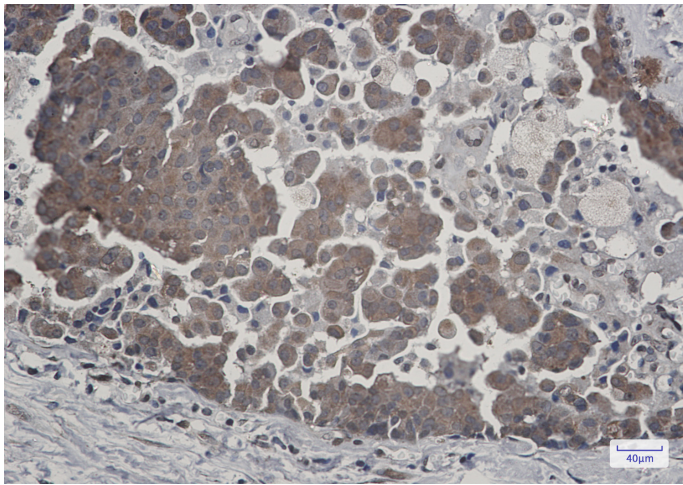


[View online »](#)

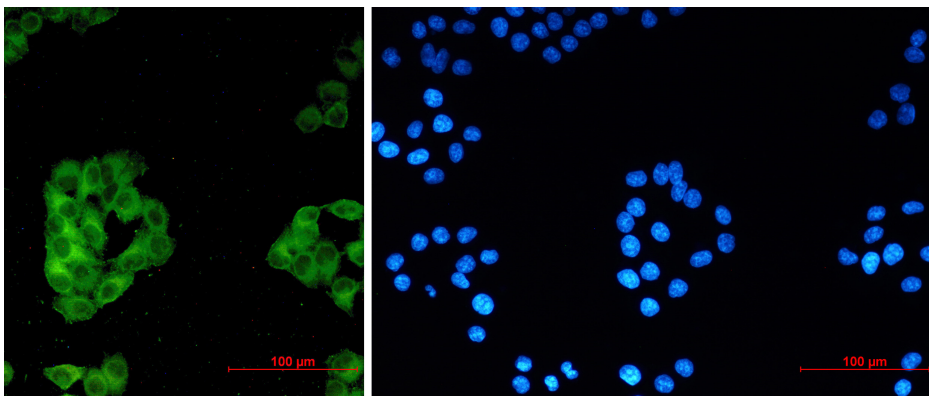
Product images:



Western blot analysis of Cytochrome P450 Reductase in K562, rat Brain, C6, 3T3 lysates using Cytochrome P450 Reductase antibody.



Immunohistochemistry of Cytochrome P450 Reductase in paraffin-embedded Human breast cancer tissue using Cytochrome P450 Reductase Rabbit mAb at dilution 1/20



Immunocytochemistry of Cytochrome P450 Reductase (green) in HeLa using Cytochrome P450 Reductase antibody at dilution 1/5, and DAPI(blue)