

Product datasheet for **TA385009**

Cytochrome P450 Reductase (POR) Rabbit Polyclonal Antibody

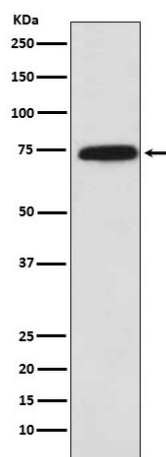
Product data:

Product Type:	Primary Antibodies
Applications:	FC, IF, IHC, WB
Recommended Dilution:	WB: 1/1000-1/5000 IHC: 1/50-1/200 ICC/IF: 1/50-1/200 FC: 1/20
Reactivity:	Human, Mouse, Rat
Host:	Rabbit
Isotype:	IgG
Clonality:	Polyclonal
Immunogen:	A synthesized peptide derived from human Cytochrome P450 Reductase
Formulation:	Rabbit IgG in phosphate buffered saline , pH 7.4, 150mM NaCl, 0.02% sodium azide and 50% glycerol.
Concentration:	lot specific
Purification:	Affinity Chromatography
Conjugation:	Unconjugated
Storage:	Store at 4°C short term. Aliquot and store at -20°C long term. Avoid freeze/thaw cycles.
Stability:	1 year
Predicted Protein Size:	77kDa
Gene Name:	cytochrome p450 oxidoreductase
Database Link:	Entrez Gene 5447 Human P16435
Background:	Swiss-Prot Acc.P16435.This enzyme is required for electron transfer from NADP to cytochrome P450 in microsomes. It can also provide electron transfer to heme oxygenase and cytochrome B5.
Synonyms:	CPR; CYPOR; DKFZp686G04235; FLJ26468; P450R



[View online »](#)

Product images:



Western blot analysis of Cytochrome P450 Reductase in A431 lysates using Cytochrome P450 Reductase antibody.