

Product datasheet for **TA385008S**

PON2 Rabbit Monoclonal Antibody [Clone ID: R05-1J3]

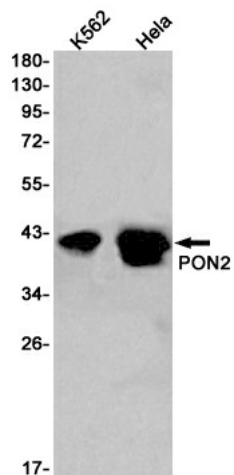
Product data:

| | |
|-------------------------|---|
| Product Type: | Primary Antibodies |
| Clone Name: | R05-1J3 |
| Applications: | IHC, IP, WB |
| Recommended Dilution: | WB: 1/2000-1/10000 IHC: 1/20 IP: 1/20 |
| Reactivity: | Human |
| Host: | Rabbit |
| Isotype: | IgG |
| Clonality: | Monoclonal |
| Immunogen: | Recombinant protein of human PON2 |
| Formulation: | 50mM Tris-Glycine(pH 7.4), 0.15M NaCl, 40% Glycerol, 0.01% Sodium azide and 0.05% BSA |
| Concentration: | lot specific |
| Purification: | Affinity Purified |
| Conjugation: | Unconjugated |
| Storage: | Store at 4°C short term. Aliquot and store at -20°C long term. Avoid freeze/thaw cycles. |
| Stability: | 1 year |
| Predicted Protein Size: | Calculated MW: 39 kDa; Observed MW: 40-42 kDa |
| Gene Name: | paraoxonase 2 |
| Database Link: | Entrez Gene 5445 Human Q15165 |
| Background: | Swiss-Prot Acc.Q15165.Capable of hydrolyzing lactones and a number of aromatic carboxylic acid esters. Has antioxidant activity. Is not associated with high density lipoprotein. Prevents LDL lipid peroxidation, reverses the oxidation of mildly oxidized LDL, and inhibits the ability of MM-LDL to induce monocyte chemotaxis. |
| Synonyms: | PON2 |

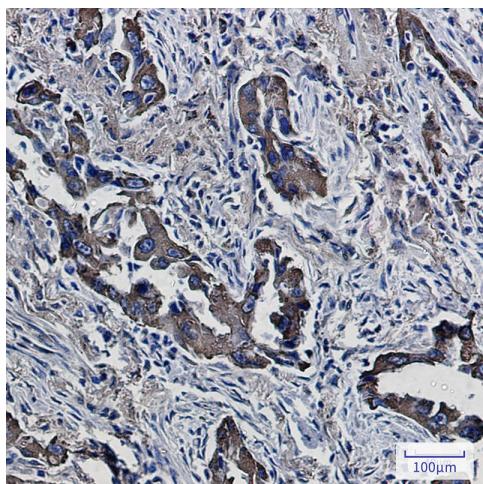


[View online »](#)

Product images:



Western blot analysis of PON2 in K562, HeLa lysates using PON2 antibody.



Immunohistochemistry analysis of paraffin-embedded Human lung cancer using PON2 antibody. High-pressure and temperature Sodium Citrate pH 6.0 was used for antigen retrieval.