

## Product datasheet for **TA385008M**

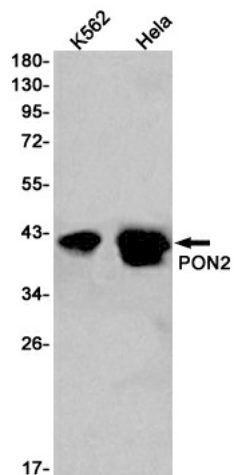
### PON2 Rabbit Monoclonal Antibody [Clone ID: R05-1J3]

#### Product data:

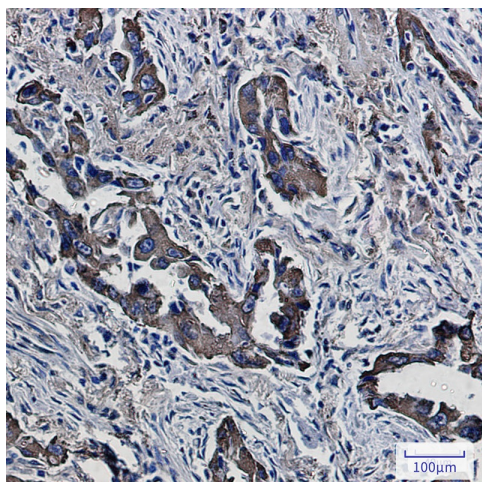
Product Type:	Primary Antibodies
Clone Name:	R05-1J3
Applications:	IHC, IP, WB
Recommended Dilution:	WB: 1/2000-1/10000 IHC: 1/20 IP: 1/20
Reactivity:	Human
Host:	Rabbit
Isotype:	IgG
Clonality:	Monoclonal
Immunogen:	Recombinant protein of human PON2
Formulation:	50mM Tris-Glycine(pH 7.4), 0.15M NaCl, 40% Glycerol, 0.01% Sodium azide and 0.05% BSA
Concentration:	lot specific
Purification:	Affinity Purified
Conjugation:	Unconjugated
Storage:	Store at 4°C short term. Aliquot and store at -20°C long term. Avoid freeze/thaw cycles.
Stability:	1 year
Predicted Protein Size:	Calculated MW: 39 kDa; Observed MW: 40-42 kDa
Gene Name:	paraoxonase 2
Database Link:	<a href="#">Entrez Gene 5445 Human Q15165</a>
Background:	Swiss-Prot Acc.Q15165.Capable of hydrolyzing lactones and a number of aromatic carboxylic acid esters. Has antioxidant activity. Is not associated with high density lipoprotein. Prevents LDL lipid peroxidation, reverses the oxidation of mildly oxidized LDL, and inhibits the ability of MM-LDL to induce monocyte chemotaxis.
Synonyms:	PON2


[View online »](#)

## Product images:



Western blot analysis of PON2 in K562, HeLa lysates using PON2 antibody.



Immunohistochemistry analysis of paraffin-embedded Human lung cancer using PON2 antibody. High-pressure and temperature Sodium Citrate pH 6.0 was used for antigen retrieval.