

Product datasheet for **TA385004S**

POLR2E Rabbit Monoclonal Antibody [Clone ID: R05-8J5]

Product data:

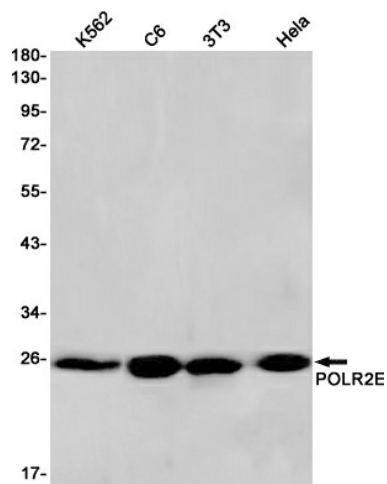
Product Type:	Primary Antibodies
Clone Name:	R05-8J5
Applications:	IHC, WB
Recommended Dilution:	WB: 1/2000 IHC: 1/20
Reactivity:	Human, Mouse, Rat
Host:	Rabbit
Isotype:	IgG
Clonality:	Monoclonal
Immunogen:	A synthetic peptide of human POLR2E
Formulation:	50mM Tris-Glycine(pH 7.4), 0.15M NaCl, 40% Glycerol, 0.01% Sodium azide and 0.05% BSA
Concentration:	lot specific
Purification:	Affinity Purified
Conjugation:	Unconjugated
Storage:	Store at 4°C short term. Aliquot and store at -20°C long term. Avoid freeze/thaw cycles.
Stability:	1 year
Predicted Protein Size:	Calculated MW: 25 kDa; Observed MW: 25 kDa
Gene Name:	polymerase (RNA) II subunit E
Database Link:	Entrez Gene 5434 Human P19388
Background:	Swiss-Prot Acc.P19388.DNA-dependent RNA polymerase catalyzes the transcription of DNA into RNA using the four ribonucleoside triphosphates as substrates. Common component of RNA polymerases I, II and III which synthesize ribosomal RNA precursors, mRNA precursors and many functional non-coding RNAs, and small RNAs, such as 5S rRNA and tRNAs, respectively. Pol II is the central component of the basal RNA polymerase II transcription machinery. Pols are composed of mobile elements that move relative to each other. In Pol II, POLR2E/RPB5 is part of the lower jaw surrounding the central large cleft and thought to grab the incoming DNA template. Seems to be the major component in this process .



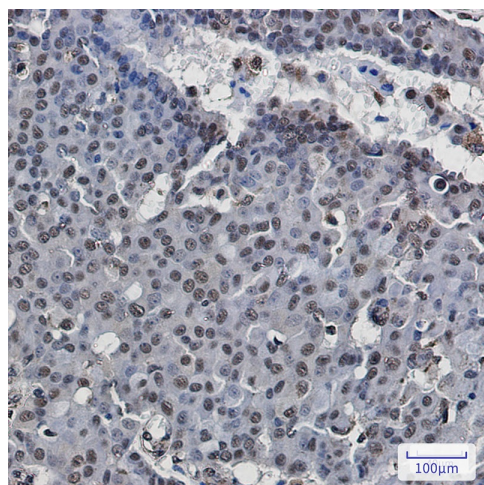
[View online »](#)

Synonyms: hRPB25; hsRPB5; RPABC1; RPB5; XAP4

Product images:



Western blot analysis of POLR2E in K562, C6, 3T3, HeLa lysates using RNA Polymerases I/II/III Subunit ABC1 antibody.



Immunohistochemistry analysis of paraffin-embedded Human breast cancer using POLR2E antibody. High-pressure and temperature Sodium Citrate pH 6.0 was used for antigen retrieval.