

## Product datasheet for **TA385003**

### **POLM Rabbit Polyclonal Antibody**

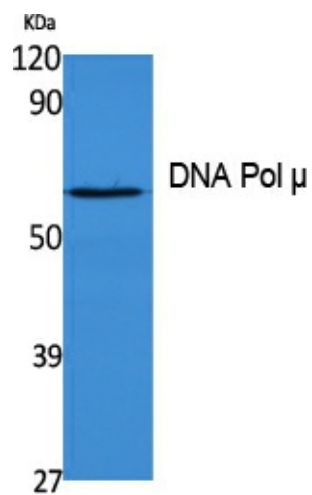
#### **Product data:**

Product Type:	Primary Antibodies
Applications:	ELISA, WB
Recommended Dilution:	WB: 1/500-1/2000 ELISA: 1/40000
Reactivity:	Human
Host:	Rabbit
Isotype:	IgG
Clonality:	Polyclonal
Immunogen:	Synthesized peptide derived from DNA Pol $\mu$ . at AA range: 210-290
Formulation:	Liquid in PBS containing 50% glycerol, 0.5% BSA and 0.02% sodium azide, pH 7.3.
Concentration:	lot specific
Purification:	Affinity Purified
Conjugation:	Unconjugated
Storage:	Store at 4°C short term. Aliquot and store at -20°C long term. Avoid freeze/thaw cycles.
Stability:	1 year
Predicted Protein Size:	Observed MW (kDa):54
Database Link:	<a href="#">Q9NP87</a>
Background:	Swiss-Prot Acc.Q9NP87.



[View online »](#)

## Product images:



Western blot analysis of DNA Polymerase mu in K562 lysates using DNA Pol  $\mu$  antibody.