

Product datasheet for **TA385002M**

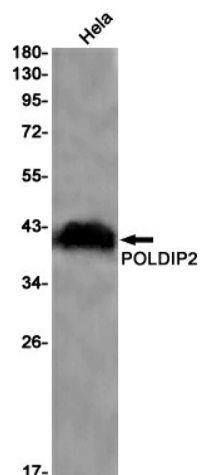
POLDIP2 Rabbit Monoclonal Antibody [Clone ID: R02-8J1]

Product data:

Product Type:	Primary Antibodies
Clone Name:	R02-8J1
Applications:	IP, WB
Recommended Dilution:	WB: 1/1000-1/2000 IP: 1/20
Reactivity:	Human
Host:	Rabbit
Isotype:	IgG
Clonality:	Monoclonal
Immunogen:	A synthetic peptide of human POLDIP2
Formulation:	50mM Tris-Glycine(pH 7.4), 0.15M NaCl, 40% Glycerol, 0.01% Sodium azide and 0.05% BSA
Concentration:	lot specific
Purification:	Affinity Purified
Conjugation:	Unconjugated
Storage:	Store at 4°C short term. Aliquot and store at -20°C long term. Avoid freeze/thaw cycles.
Stability:	1 year
Predicted Protein Size:	Calculated MW: 42 kDa; Observed MW: 38 kDa
Gene Name:	polymerase (DNA) delta interacting protein 2
Database Link:	Entrez Gene 26073 Human Q9Y2S7
Background:	Swiss-Prot Acc.Q9Y2S7.Polymerase delta-interacting protein 2
Synonyms:	DKFZp586F1524; p38; PDIP38; POLD4

[View online »](#)

Product images:



Western blot analysis of POLDIP2 in HeLa lysates using POLDIP2 antibody.