

Product datasheet for **TA384998S**

Adipose Triglyceride Lipase (PNPLA2) Rabbit Monoclonal Antibody [Clone ID: R06-9B2]

Product data:

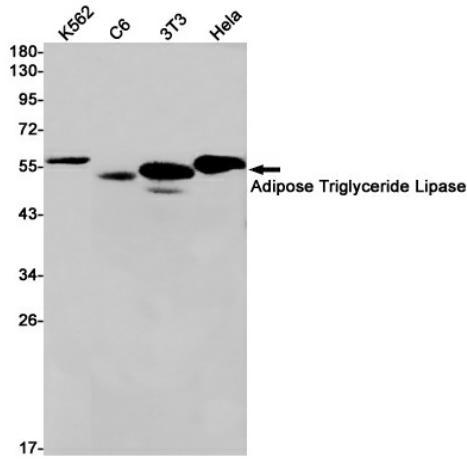
| | |
|-------------------------|--|
| Product Type: | Primary Antibodies |
| Clone Name: | R06-9B2 |
| Applications: | IHC, IP, WB |
| Recommended Dilution: | WB: 1/1000 IHC: 1/500 IP: 1/20 |
| Reactivity: | Human, Mouse, Rat |
| Host: | Rabbit |
| Isotype: | IgG |
| Clonality: | Monoclonal |
| Immunogen: | Recombinant protein of human Adipose Triglyceride Lipase |
| Formulation: | 50mM Tris-Glycine(pH 7.4), 0.15M NaCl, 40% Glycerol, 0.01% Sodium azide and 0.05% BSA |
| Concentration: | lot specific |
| Purification: | Affinity Purified |
| Conjugation: | Unconjugated |
| Storage: | Store at 4°C short term. Aliquot and store at -20°C long term. Avoid freeze/thaw cycles. |
| Stability: | 1 year |
| Predicted Protein Size: | Calculated MW: 55 kDa; Observed MW: 55 kDa |
| Gene Name: | patatin like phospholipase domain containing 2 |
| Database Link: | Entrez Gene 57104 Human Q96AD5 |
| Background: | Swiss-Prot Acc.Q96AD5.Catalyzes the initial step in triglyceride hydrolysis in adipocyte and non-adipocyte lipid droplets (PubMed:15550674). Also has acylglycerol transacylase activity. May act coordinately with LIPE/HLS within the lipolytic cascade. Regulates adiposome size and may be involved in the degradation of adiposomes (PubMed:16239926). May play an important role in energy homeostasis. May play a role in the response of the organism to starvation, enhancing hydrolysis of triglycerides and providing free fatty acids to other tissues to be oxidized in situations of energy depletion. |



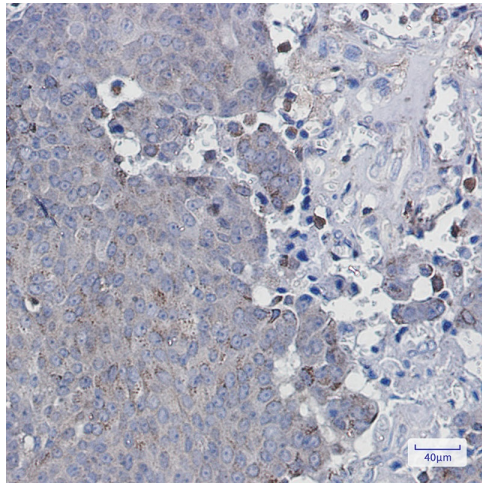
[View online »](#)

Synonyms: 1110001C14Rik; ATGL; DESNUTRIN; DKFZp667M109; FP17548; IPLA2-zeta; PEDF-R; TTS-2.2; TTS2; TTS2.2

Product images:



Western blot analysis of Adipose Triglyceride Lipase in K562, C6, 3T3, HeLa lysates using Adipose Triglyceride Lipase antibody.



Immunohistochemistry analysis of paraffin-embedded Human breast cancer using Adipose Triglyceride Lipase antibody. High-pressure and temperature Sodium Citrate pH 6.0 was used for antigen retrieval.