

Product datasheet for **TA384997**

PMS2 Rabbit Polyclonal Antibody

Product data:

Product Type:	Primary Antibodies
Applications:	FC, IF, IHC, IP, WB
Recommended Dilution:	WB: 1/500-1/2000 IHC: 1/50-1/200 ICC/IF: 1/50-1/200 IP: 1/50 FC: 1/50
Reactivity:	Human
Host:	Rabbit
Isotype:	IgG
Clonality:	Polyclonal
Immunogen:	A synthesized peptide derived from human PMS2
Formulation:	Rabbit IgG in phosphate buffered saline , pH 7.4, 150mM NaCl, 0.02% sodium azide and 50% glycerol.
Concentration:	lot specific
Purification:	Affinity Chromatography
Conjugation:	Unconjugated
Storage:	Store at 4°C short term. Aliquot and store at -20°C long term. Avoid freeze/thaw cycles.
Stability:	1 year
Predicted Protein Size:	110kDa
Gene Name:	PMS1 homolog 2, mismatch repair system component
Database Link:	Entrez Gene 5395 Human P54278



[View online »](#)

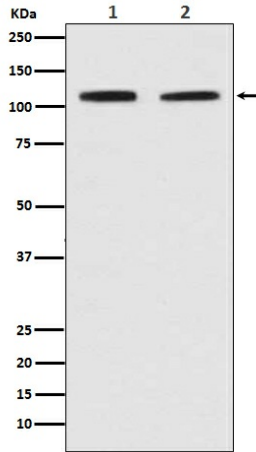
Background:

Swiss-Prot Acc.P54278.Assembly of the MutL-MutS-heteroduplex ternary complex in presence of RFC and PCNA is sufficient to activate endonuclease activity of PMS2. It introduces single-strand breaks near the mismatch and thus generates new entry points for the exonuclease EXO1 to degrade the strand containing the mismatch. DNA methylation would prevent cleavage and therefore assure that only the newly mutated DNA strand is going to be corrected.

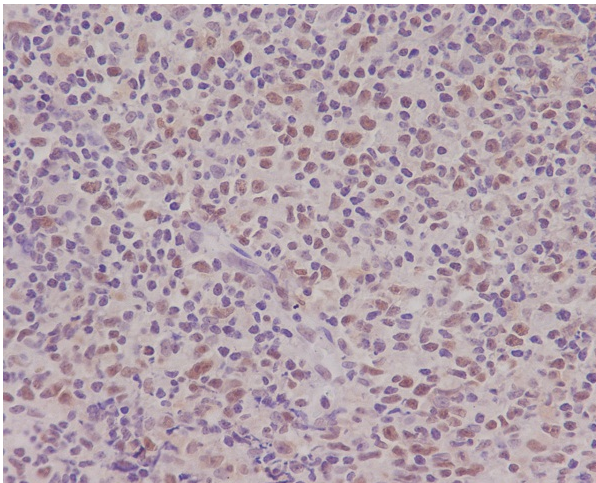
Synonyms:

HNPCC4; H_DJ0042M02.9; PMS2CL; PMSL2

Product images:



Western blot analysis of PMS2 in (1) Jurkat cell lysate; (2) HeLa cell lysate.



Immunohistochemical analysis of paraffin-embedded human tonsil, using PMS2 Antibody.