

Product datasheet for **TA384991S**

Phospholipase A2 IIA (PLA2G2A) Rabbit Monoclonal Antibody [Clone ID: R09-4F9]

Product data:

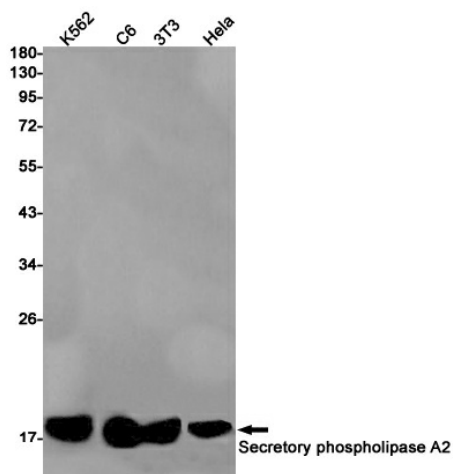
Product Type:	Primary Antibodies
Clone Name:	R09-4F9
Applications:	WB
Recommended Dilution:	WB: 1/1000
Reactivity:	Human, Mouse, Rat
Host:	Rabbit
Isotype:	IgG
Clonality:	Monoclonal
Immunogen:	A synthetic peptide of human Secretory phospholipase A2
Formulation:	50mM Tris-Glycine(pH 7.4), 0.15M NaCl, 40% Glycerol, 0.01% Sodium azide and 0.05% BSA
Concentration:	lot specific
Purification:	Affinity Purified
Conjugation:	Unconjugated
Storage:	Store at 4°C short term. Aliquot and store at -20°C long term. Avoid freeze/thaw cycles.
Stability:	1 year
Predicted Protein Size:	Calculated MW: 16 kDa; Observed MW: 16 kDa
Gene Name:	phospholipase A2 group IIA
Database Link:	Entrez Gene 5320 Human P14555
Background:	Swiss-Prot Acc.P14555.Catalyzes the calcium-dependent hydrolysis of the 2-acyl groups in 3-sn-phosphoglycerides (PubMed:2925633). Thought to participate in the regulation of phospholipid metabolism in biomembranes including eicosanoid biosynthesis. Independent of its catalytic activity, acts as a ligand for integrins (PubMed:18635536, PubMed:25398877). Binds to and activates integrins ITGAV:ITGB3, ITGA4:ITGB1 and ITGA5:ITGB1 (PubMed:18635536, PubMed:25398877). Binds to a site (site 2) which is distinct from the classical ligand-binding site (site 1) and induces integrin conformational changes and enhanced ligand binding to site 1 (PubMed:25398877). Induces cell proliferation in an integrin-dependent manner (PubMed:18635536).



[View online »](#)

Synonyms: MOM1; NPS-PLA2; PLA2; PLA2B; PLA2L; PLA2S; PLAS1; RASF-A; sPLA2

Product images:



Western blot analysis of Secretory Phospholipase A2 in K562, C6, 3T3, HeLa lysates using Secretory Phospholipase A2 antibody.