

## Product datasheet for **TA384990**

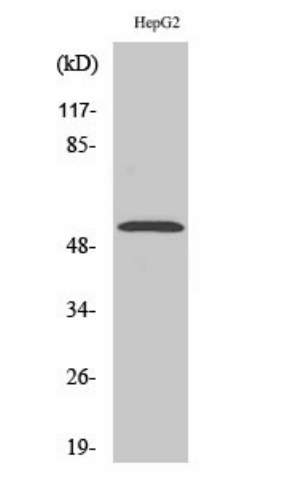
### PKNOX2 Rabbit Polyclonal Antibody

#### Product data:

Product Type:	Primary Antibodies
Applications:	ELISA, IHC, WB
Recommended Dilution:	WB: 1/1000 IHC: 1/50
Reactivity:	Human, Mouse
Host:	Rabbit
Isotype:	IgG
Clonality:	Polyclonal
Immunogen:	Synthesized peptide derived from the C-terminal region of human PREP-2. at AA range: 310-390
Formulation:	Liquid in PBS containing 50% glycerol, 0.5% BSA and 0.02% sodium azide, pH 7.3.
Concentration:	lot specific
Purification:	Affinity Purified
Conjugation:	Unconjugated
Storage:	Store at 4°C short term. Aliquot and store at -20°C long term. Avoid freeze/thaw cycles.
Stability:	1 year
Predicted Protein Size:	55 kDa
Gene Name:	PBX/knotted 1 homeobox 2
Database Link:	<a href="#">Entrez Gene 63876 Human Q96KN3</a>
Synonyms:	FLJ13074; PREP2



[View online »](#)

**Product images:**

Western blot analysis of PKNOX2 in HepG2 lysates using PKNOX2 antibody.