

Product datasheet for **TA384988**

PKM2 (PKM) Rabbit Polyclonal Antibody

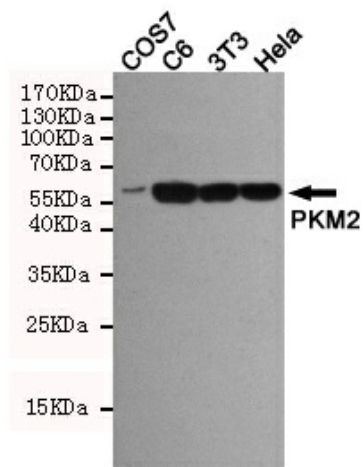
Product data:

Product Type:	Primary Antibodies
Applications:	WB
Recommended Dilution:	WB: 1/1000
Reactivity:	Human, Mouse, Rat, Monkey
Host:	Rabbit
Isotype:	IgG
Clonality:	Polyclonal
Immunogen:	CVTEVENGSLGSKKGVNLP
Formulation:	Liquid in PBS containing 50% glycerol, 0.5% BSA and 0.03% Proclin 300, pH 7.3.
Concentration:	lot specific
Purification:	Affinity Purified
Conjugation:	Unconjugated
Storage:	Store at 4°C short term. Aliquot and store at -20°C long term. Avoid freeze/thaw cycles.
Stability:	1 year
Predicted Protein Size:	60kDa
Gene Name:	pyruvate kinase, muscle
Database Link:	Entrez Gene 5315 Human P14618
Background:	Swiss-Prot Acc.P14618.Pyruvate kinase is a glycolytic enzyme that catalyses the conversion of phosphoenolpyruvate to pyruvate. PKM2 is shown to be essential for aerobic glycolysis in tumors, known as the Warburg effect.
Synonyms:	CTHBP; OIP3; PK3; PKM2; TCB; THBP1



[View online »](#)

Product images:



Western blot detection of PKM2 in COS7,C6,3T3 and HeLa cell lysates using PKM2 Rabbit pAb (1:1000 diluted).Predicted band size:60kDa.Observed band size:60kDa.