

## Product datasheet for TA384987M

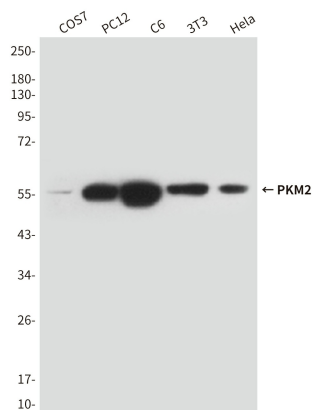
### PKM2 (PKM) Mouse Monoclonal Antibody [Clone ID: 1A7-G6-H6]

#### Product data:

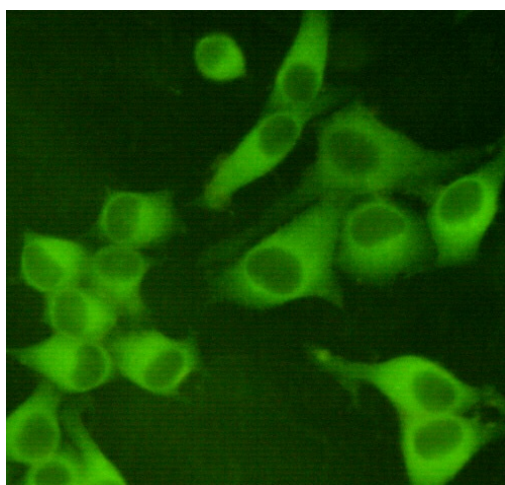
Product Type:	Primary Antibodies
Clone Name:	1A7-G6-H6
Applications:	IF, WB
Recommended Dilution:	WB: 1/1000 ICC: 1/400
Reactivity:	Human, Mouse, Rat, Monkey
Host:	Mouse
Isotype:	IgG1
Clonality:	Monoclonal
Immunogen:	Purified recombinant human PKM2 protein fragments expressed in E.coli.
Formulation:	Liquid in PBS containing 50% glycerol, 0.5% BSA and 0.03% Proclin 300, pH 7.3.
Concentration:	lot specific
Purification:	Affinity Purified
Conjugation:	Unconjugated
Storage:	Store at 4°C short term. Aliquot and store at -20°C long term. Avoid freeze/thaw cycles.
Stability:	1 year
Predicted Protein Size:	60kDa
Gene Name:	pyruvate kinase, muscle
Database Link:	<a href="#">Entrez Gene 5315 Human P14618</a>
Background:	Swiss-Prot Acc.P14618.Pyruvate kinase is a glycolytic enzyme that catalyses the conversion of phosphoenolpyruvate to pyruvate. PKM2 is shown to be essential for aerobic glycolysis in tumors, known as the Warburg effect.
Synonyms:	CTHBP; OIP3; PK3; PKM2; TCB; THBP1


[View online »](#)

## Product images:



Western blot analysis of PKM2 in COS7, PC-12, C6, 3T3 and HeLa lysates using PKM2 antibody.



Immunocytochemistry staining of HeLa cells fixed with 4% Paraformaldehyde and using anti-PKM2 mouse mAb (dilution 1:400).