

## Product datasheet for **TA384983**

### PI 3 Kinase p85 alpha (PIK3R1) Rabbit Monoclonal Antibody [Clone ID: R03-3C7]

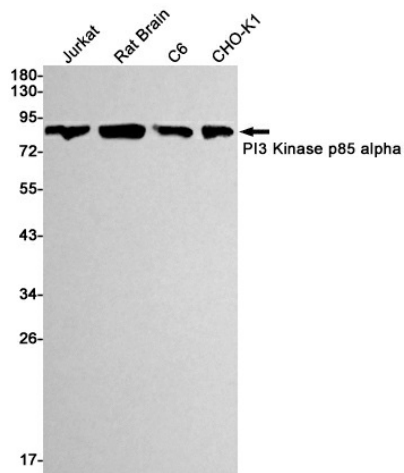
#### Product data:

Product Type:	Primary Antibodies
Clone Name:	R03-3C7
Applications:	IF, IP, WB
Recommended Dilution:	WB: 1/1000 ICC/IF: 1/50 IP: 1/20
Reactivity:	Human, Rat, Hamster
Host:	Rabbit
Isotype:	IgG
Clonality:	Monoclonal
Immunogen:	A synthetic peptide of human PI 3 Kinase p85 alpha
Formulation:	50mM Tris-Glycine(pH 7.4), 0.15M NaCl, 40% Glycerol, 0.01% Sodium azide and 0.05% BSA
Concentration:	lot specific
Purification:	Affinity Purified
Conjugation:	Unconjugated
Storage:	Store at 4°C short term. Aliquot and store at -20°C long term. Avoid freeze/thaw cycles.
Stability:	1 year
Predicted Protein Size:	Calculated MW: 84 kDa; Observed MW: 84 kDa
Gene Name:	phosphoinositide-3-kinase regulatory subunit 1
Database Link:	<a href="#">Entrez Gene 5295 Human P27986</a>
Background:	Swiss-Prot Acc.P27986.
Synonyms:	GRB1; p85; p85-ALPHA; PI3K

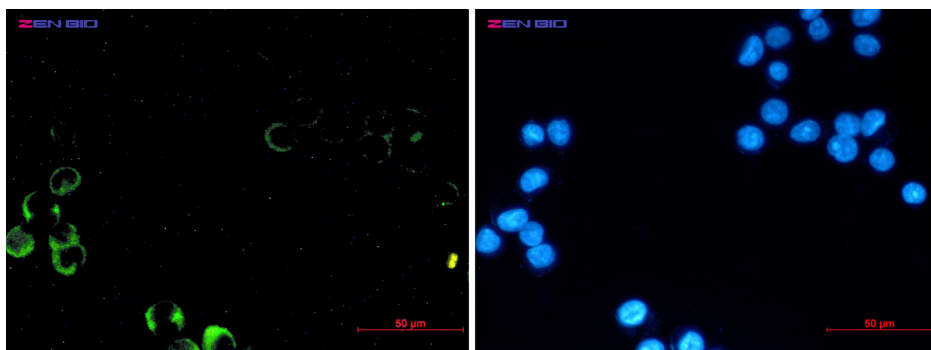


[View online »](#)

## Product images:



Western blot detection of PI3 Kinase p85 alpha in Jurkat, C6, CHO-K1 cell lysates using PI3 Kinase p85 alpha Rabbit mAb (1:1000 diluted). Predicted band size: 84 kDa. Observed band size: 84 kDa.



Immunocytochemistry of PI3 Kinase p85 alpha (green) in MCF-7 using PI3 Kinase p85 alpha antibody at dilution 1/20, and DAPI (blue)