

## Product datasheet for **TA384982**

### PI 3 Kinase p85 alpha (PIK3R1) Rabbit Polyclonal Antibody

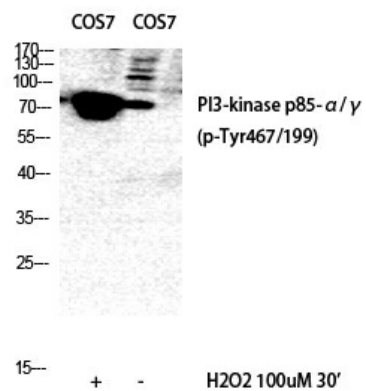
#### Product data:

Product Type:	Primary Antibodies
Applications:	ELISA, IF, IHC, WB
Recommended Dilution:	WB: 1/500-1/2000 IHC: 1/100-1/300 IF: 1/200-1/1000 ELISA: 1/10000
Reactivity:	Human, Mouse, Rat, Monkey
Host:	Rabbit
Isotype:	IgG
Clonality:	Polyclonal
Immunogen:	The antiserum was produced against synthesized peptide derived from human PI3-kinase p85-alpha/gamma around the phosphorylation site of Tyr467/199. AA range:436-485 (Phosphorylated)
Formulation:	Liquid in PBS containing 50% glycerol, 0.5% BSA and 0.02% sodium azide, pH 7.3.
Concentration:	lot specific
Purification:	Affinity Purified
Conjugation:	Unconjugated
Storage:	Store at 4°C short term. Aliquot and store at -20°C long term. Avoid freeze/thaw cycles.
Stability:	1 year
Predicted Protein Size:	Observed MW (kDa):55/85
Gene Name:	phosphoinositide-3-kinase regulatory subunit 1
Database Link:	<a href="#">Entrez Gene 5295 Human P27986</a>
Background:	Swiss-Prot Acc.P27986.
Synonyms:	GRB1; p85; p85-ALPHA; PI3K



[View online »](#)

## Product images:



Western Blot analysis of COS7 cells using  
Phospho-PI 3-kinase p85/p55 (Y467/199)  
Polyclonal Antibody