

## Product datasheet for **TA384980**

### PI 3 Kinase p85 alpha (PIK3R1) Mouse Monoclonal Antibody [Clone ID: 3H5-1H4-9D2]

#### Product data:

Product Type:	Primary Antibodies
Clone Name:	3H5-1H4-9D2
Applications:	IHC, WB
Recommended Dilution:	WB: 1/1000-2000 IHC: 1/100-200
Reactivity:	Human, Mouse, Rat
Host:	Mouse
Isotype:	IgG1
Clonality:	Monoclonal
Immunogen:	Purified recombinant protein expressed in E.coli.
Formulation:	Liquid in PBS containing 50% glycerol, 0.5% BSA and 0.03% Proclin 300, pH 7.3.
Concentration:	lot specific
Purification:	Affinity Purified
Conjugation:	Unconjugated
Storage:	Store at 4°C short term. Aliquot and store at -20°C long term. Avoid freeze/thaw cycles.
Stability:	1 year
Predicted Protein Size:	85kDa
Gene Name:	phosphoinositide-3-kinase regulatory subunit 1
Database Link:	<a href="#">Entrez Gene 5295 Human P27986</a>



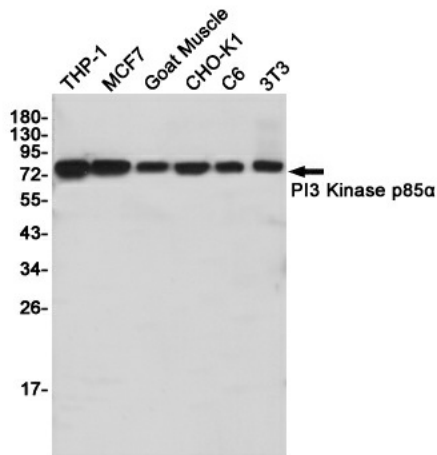
[View online »](#)

**Background:**

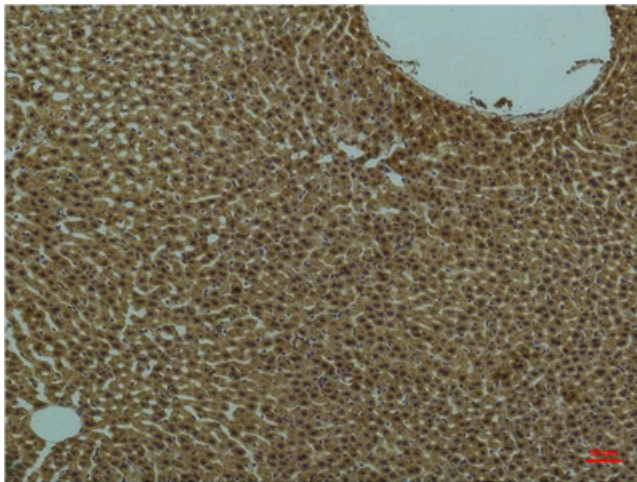
Swiss-Prot Acc.P27986.Binds to activated (phosphorylated) protein-Tyr kinases, through its SH2 domain, and acts as an adapter, mediating the association of the p110 catalytic unit to the plasma membrane. Necessary for the insulin-stimulated increase in glucose uptake and glycogen synthesis in insulin-sensitive tissues. Plays an important role in signaling in response to FGFR1, FGFR2, FGFR3, FGFR4, KITLG/SCF, KIT, PDGFRA and PDGFRB. Likewise, plays a role in ITGB2 signaling (PubMed:17626883, PubMed:19805105, PubMed:7518429). Modulates the cellular response to ER stress by promoting nuclear translocation of XBP1 isoform 2 in a ER stress- and/or insulin-dependent manner during metabolic overloading in the liver and hence plays a role in glucose tolerance improvement (PubMed:20348923).

**Synonyms:**

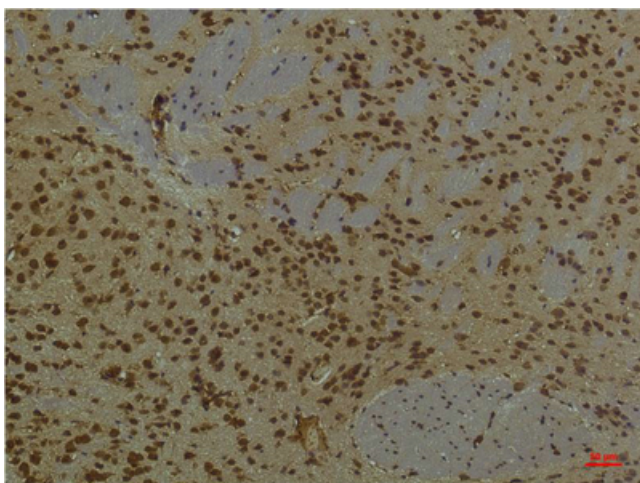
GRB1; p85; p85-ALPHA; PI3K

**Product images:**

Western blot detection of PI3 Kinase p85α in THP-1, MCF7, Goat Muscle, CHO-K1, C6, 3T3 cell lysates using PI3 Kinase p85α (3H5) Mouse mAb (1:1000 diluted). Predicted band size: 85 kDa. Observed band size: 85 kDa.



Immunohistochemistry analysis of paraffin-embedded rat Liver Tissue using PI3 Kinase p85 alpha (3H5) antibody. High-pressure and temperature Sodium Citrate pH 6.0 was used for antigen retrieval.



Immunohistochemical analysis of paraffin-embedded Mouse Brain Tissue using PI3 Kinase P85  $\alpha$  Mouse mAb diluted at 1:200.