

Product datasheet for **TA384974**

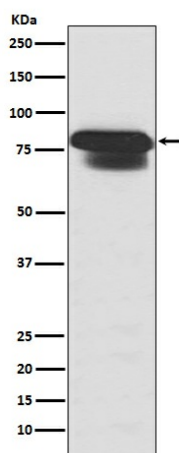
PIAS1 Rabbit Polyclonal Antibody

Product data:

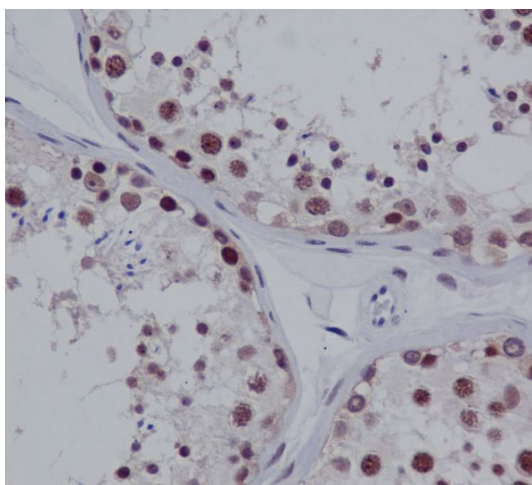
Product Type:	Primary Antibodies
Applications:	FC, IF, IHC, IP, WB
Recommended Dilution:	WB: 1/500-1/2000 IHC: 1/50-1/200 ICC/IF: 1/50-1/200 IP: 1/50 FC: 1/50
Reactivity:	Human, Mouse, Rat
Host:	Rabbit
Isotype:	IgG
Clonality:	Polyclonal
Immunogen:	A synthesized peptide derived from human PIAS1
Formulation:	Rabbit IgG in phosphate buffered saline , pH 7.4, 150mM NaCl, 0.02% sodium azide and 50% glycerol.
Concentration:	lot specific
Purification:	Affinity Chromatography
Conjugation:	Unconjugated
Storage:	Store at 4°C short term. Aliquot and store at -20°C long term. Avoid freeze/thaw cycles.
Stability:	1 year
Predicted Protein Size:	76kDa
Database Link:	O75925
Background:	Swiss-Prot Acc.O75925,O75928,Q9Y6X2.This proteins are involved in the pathway protein sumoylation, which is part of Protein modification.



[View online »](#)

Product images:

Western blot analysis of PIAS1+PIAS2+PIAS3 in HepG2 lysates using PIAS1/2 antibody.



Immunohistochemistry analysis of paraffin-embedded Human colon using PIAS1+PIAS2+PIAS3 antibody. High-pressure and temperature Sodium Citrate pH 6.0 was used for antigen retrieval.