

Product datasheet for **TA384973**

PHC1 Mouse Monoclonal Antibody [Clone ID: 8G5-1E6-3G7]

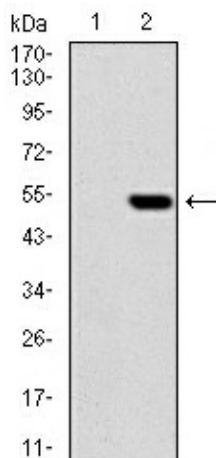
Product data:

Product Type:	Primary Antibodies
Clone Name:	8G5-1E6-3G7
Applications:	FC
Recommended Dilution:	FC: 1/200-1/400
Reactivity:	Human
Host:	Mouse
Isotype:	IgG1
Clonality:	Monoclonal
Immunogen:	Purified recombinant fragment of human PHC1 (AA: 758-1004) expressed in E. Coli.
Formulation:	Liquid in PBS containing 50% glycerol, 0.5% BSA and 0.03% Proclin 300, pH 7.3.
Concentration:	lot specific
Purification:	Affinity Purified
Conjugation:	Unconjugated
Storage:	Store at 4°C short term. Aliquot and store at -20°C long term. Avoid freeze/thaw cycles.
Stability:	1 year
Predicted Protein Size:	105.5kDa
Gene Name:	polyhomeotic homolog 1
Database Link:	Entrez Gene 1911 Human P78364
Background:	Swiss-Prot Acc.P78364.This gene is a homolog of the Drosophila polyhomeotic gene, which is a member of the Polycomb group of genes. The gene product is a component of a multimeric protein complex that contains EDR2 and the vertebrate Polycomb protein BMH1. The gene product, the EDR2 protein, and the Drosophila polyhomeotic protein share 2 highly conserved domains, named homology domains I and II. These domains are involved in protein-protein interactions and may mediate heterodimerization of the protein encoded by this gene and the EDR2 protein.
Synonyms:	EDR1; HPH1; PH1; RAE28; Rae28-like

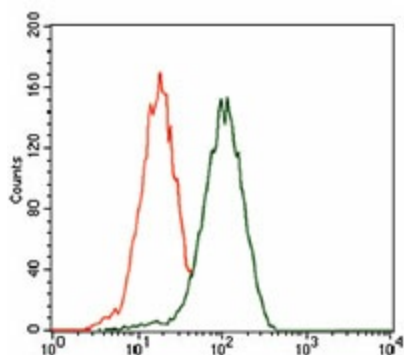


[View online »](#)

Product images:



Western blot analysis of HEK293 (1) and PHC1 (AA: 7581004)hlgGfC transfected HEK293 (2) lysates using PHC1 antibody.



Flow cytometry analysis of HEK293 stained with PHC1 antibody (green) and negative control (red).