

Product datasheet for **TA384972S**

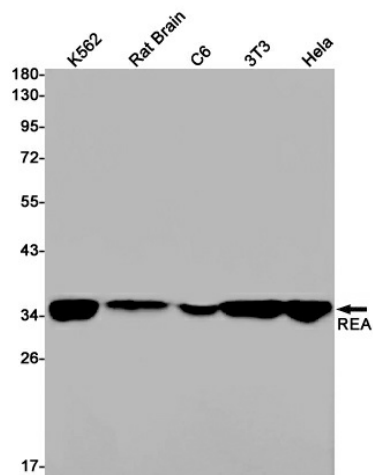
REA (PHB2) Rabbit Monoclonal Antibody [Clone ID: R01-5J9]

Product data:

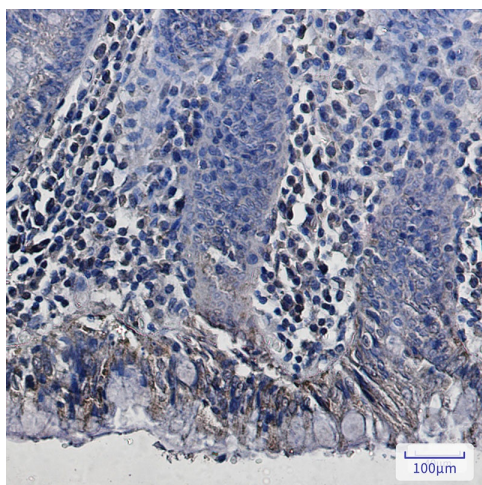
Product Type:	Primary Antibodies
Clone Name:	R01-5J9
Applications:	IF, IHC, WB
Recommended Dilution:	WB: 1/2000-1/10000 IHC: 1/50 ICC/IF: 1/50
Reactivity:	Human, Mouse, Rat
Host:	Rabbit
Isotype:	IgG
Clonality:	Monoclonal
Immunogen:	A synthetic peptide of human REA
Formulation:	50mM Tris-Glycine(pH 7.4), 0.15M NaCl, 40% Glycerol, 0.01% Sodium azide and 0.05% BSA
Concentration:	lot specific
Purification:	Affinity Purified
Conjugation:	Unconjugated
Storage:	Store at 4°C short term. Aliquot and store at -20°C long term. Avoid freeze/thaw cycles.
Stability:	1 year
Predicted Protein Size:	Calculated MW: 33 kDa; Observed MW: 33 kDa
Gene Name:	prohibitin 2
Database Link:	Entrez Gene 11331 Human Q99623
Background:	Swiss-Prot Acc.Q99623.Acts as a mediator of transcriptional repression by nuclear hormone receptors via recruitment of histone deacetylases . Functions as an estrogen receptor (ER)-selective coregulator that potentiates the inhibitory activities of antiestrogens and represses the activity of estrogens. Competes with NCOA1 for modulation of ER transcriptional activity. Probably involved in regulating mitochondrial respiration activity and in aging.
Synonyms:	BAP; Bap37; BCAP37; D-prohibitin; MGC117268; p22; PNAS-141; REA



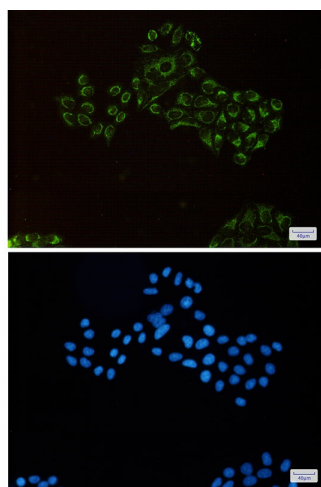
[View online »](#)

Product images:

Western blot analysis of REA in K562, rat Brain, C6, 3T3, HeLa lysates using REA antibody.



Immunohistochemistry analysis of paraffin-embedded Human colon cancer using REA antibody. High-pressure and temperature Sodium Citrate pH 6.0 was used for antigen retrieval.



Immunocytochemistry analysis of REA(green) in HeLa using REA antibody, and DAPI(blue)