

Product datasheet for **TA384971**

Prohibitin (PHB) Rabbit Polyclonal Antibody

Product data:

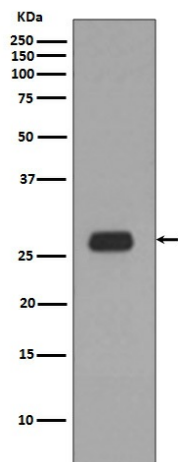
Product Type:	Primary Antibodies
Applications:	FC, IF, IHC, IP, WB
Recommended Dilution:	WB: 1/500-1/2000 IHC: 1/50-1/200 ICC/IF: 1/50-1/200 IP: 1/30 FC: 1/30
Reactivity:	Human, Mouse, Rat
Host:	Rabbit
Isotype:	IgG
Clonality:	Polyclonal
Immunogen:	A synthesized peptide derived from human Prohibitin
Formulation:	Rabbit IgG in phosphate buffered saline , pH 7.4, 150mM NaCl, 0.02% sodium azide and 50% glycerol.
Concentration:	lot specific
Purification:	Affinity Chromatography
Conjugation:	Unconjugated
Storage:	Store at 4°C short term. Aliquot and store at -20°C long term. Avoid freeze/thaw cycles.
Stability:	1 year
Predicted Protein Size:	30kDa
Gene Name:	prohibitin
Database Link:	Entrez Gene 5245 Human P35232
Background:	Swiss-Prot Acc.P35232.PHB1 is 30kDa tumor suppressor protein involved in cell cycle control. PHB1 has been found in mitochondria, the nucleus and the plasma membrane, as well as extracellularly in circulation. In mitochondria prohibitins mainly exist as membrane-bound ring complexes and function as chaperones maintaining mitochondrial protein stability during protein synthesis and transportation.



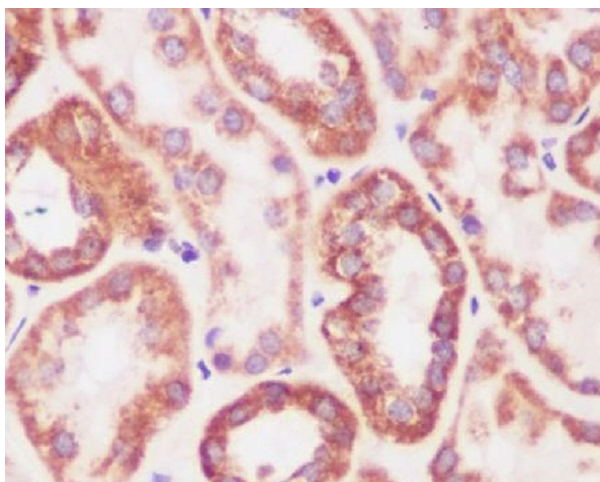
[View online »](#)

Synonyms: PHB1; prohibitin

Product images:



Western blot analysis of Prohibitin in Ramos lysates using Prohibitin antibody.



Immunohistochemistry analysis of paraffin-embedded Human kidney using Prohibitin antibody. High-pressure and temperature Sodium Citrate pH 6.0 was used for antigen retrieval.