

Product datasheet for **TA384967M**

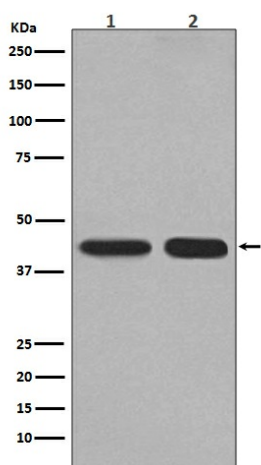
PGK1 Rabbit Polyclonal Antibody

Product data:

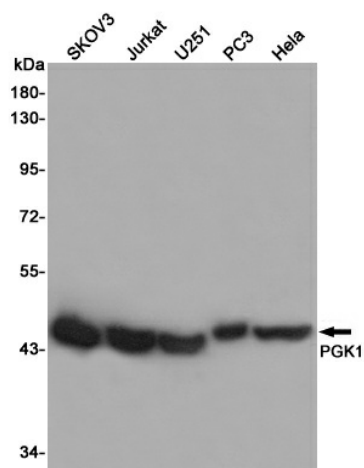
Product Type:	Primary Antibodies
Applications:	FC, IF, WB
Recommended Dilution:	WB: 1/500-1/2000 ICC/IF: 1/50-1/200 FC: 1/50
Reactivity:	Human, Mouse, Rat
Host:	Rabbit
Isotype:	IgG
Clonality:	Polyclonal
Immunogen:	A synthesized peptide derived from human PGK1
Formulation:	Rabbit IgG in phosphate buffered saline , pH 7.4, 150mM NaCl, 0.02% sodium azide and 50% glycerol.
Concentration:	lot specific
Purification:	Affinity Chromatography
Conjugation:	Unconjugated
Storage:	Store at 4°C short term. Aliquot and store at -20°C long term. Avoid freeze/thaw cycles.
Stability:	1 year
Predicted Protein Size:	45kDa
Gene Name:	phosphoglycerate kinase 1
Database Link:	Entrez Gene 5230 Human P00558
Background:	Swiss-Prot Acc.P00558.The PGK1 gene encodes phosphoglycerate kinase-1, also known as ATP:3-phosphoglycerate 1-phosphotransferase (EC 2.7.2.3), which catalyzes the reversible conversion of 1,3-diphosphoglycerate to 3-phosphoglycerate during glycolysis, generating one molecule of ATP. It Belongs to the phosphoglycerate kinase family and defects in PGK1 are the cause of phosphoglycerate kinase 1 deficiency (PGK1D).
Synonyms:	MGC8947; MGC117307; MGC142128; MIG10; PGKA


[View online »](#)

Product images:



Western blot analysis of PGK1 expression in (1) HepG2 cell lysate; (2) Mouse kidney lysate.



Western blot analysis of PGK1 in SKOV-3, Jurkat, U251, PC-3 and HeLa lysates using PGK1 antibody.