

Product datasheet for **TA384966**

PLGF (PGF) Rabbit Polyclonal Antibody

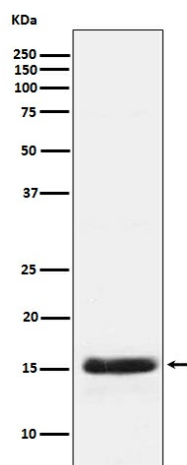
Product data:

Product Type:	Primary Antibodies
Applications:	WB
Recommended Dilution:	WB: 1/500-1/2000
Reactivity:	Human
Host:	Rabbit
Isotype:	IgG
Clonality:	Polyclonal
Immunogen:	A synthesized peptide derived from human PLGF
Formulation:	Rabbit IgG in phosphate buffered saline , pH 7.4, 150mM NaCl, 0.02% sodium azide and 50% glycerol.
Concentration:	lot specific
Purification:	Affinity Chromatography
Conjugation:	Unconjugated
Storage:	Store at 4°C short term. Aliquot and store at -20°C long term. Avoid freeze/thaw cycles.
Stability:	1 year
Predicted Protein Size:	25kDa
Gene Name:	placental growth factor
Database Link:	Entrez Gene 5228 Human P49763
Background:	Swiss-Prot Acc.P49763.Growth factor active in angiogenesis and endothelial cell growth, stimulating their proliferation and migration. It binds to the receptor FLT1/VEGFR-1. Isoform PIGF-2 binds NRP1/neuropilin-1 and NRP2/neuropilin-2 in a heparin-dependent manner.
Synonyms:	D12S1900; PGFL; PLGF; PIGF-2; SHGC-10760



[View online »](#)

Product images:



Western blot analysis of PLGF in Human PLGF Recombinant protein using PLGF antibody.