

Product datasheet for **TA384963**

PFKP Rabbit Monoclonal Antibody [Clone ID: R05-4H9]

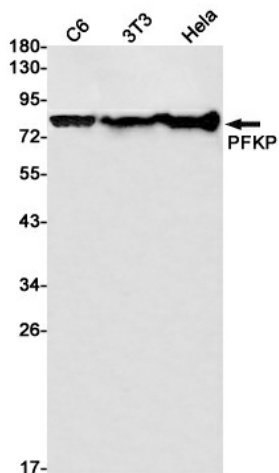
Product data:

Product Type:	Primary Antibodies
Clone Name:	R05-4H9
Applications:	IF, IP, WB
Recommended Dilution:	WB: 1/1000 ICC/IF: 1/50 IP: 1/20
Reactivity:	Human, Mouse, Rat
Host:	Rabbit
Isotype:	IgG
Clonality:	Monoclonal
Immunogen:	Recombinant protein of human PFKP
Formulation:	50mM Tris-Glycine(pH 7.4), 0.15M NaCl, 40% Glycerol, 0.01% Sodium azide and 0.05% BSA
Concentration:	lot specific
Purification:	Affinity Purified
Conjugation:	Unconjugated
Storage:	Store at 4°C short term. Aliquot and store at -20°C long term. Avoid freeze/thaw cycles.
Stability:	1 year
Predicted Protein Size:	Calculated MW: 86 kDa; Observed MW: 86 kDa
Gene Name:	phosphofructokinase, platelet
Database Link:	Entrez Gene 5214 Human Q01813
Background:	Swiss-Prot Acc.Q01813.Catalyzes the phosphorylation of D-fructose 6-phosphate to fructose 1,6-bisphosphate by ATP, the first committing step of glycolysis.MiscellaneousIn human PFK exists as a system of 3 types of subunits, PFKM (muscle), PFKL (liver) and PFKP (platelet) isoenzymes.
Synonyms:	FLJ40226; PFK-C; PFKF; Phosphohexokinase

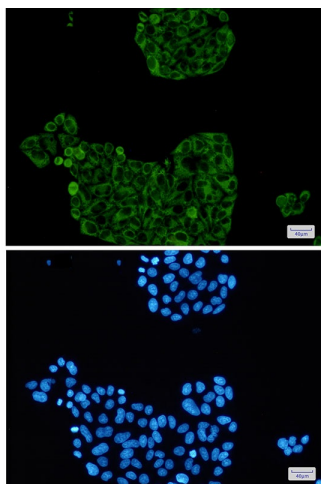


[View online »](#)

Product images:



Western blot analysis of PFKP in C6, 3T3, HeLa lysates using PFKP antibody.



Immunocytochemistry analysis of PFKP(green) in HeLa using PFKP antibody, and DAPI(blue)