

## Product datasheet for **TA384962M**

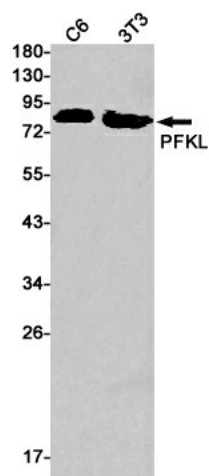
### PFKL Rabbit Monoclonal Antibody [Clone ID: R04-7A4]

#### Product data:

Product Type:	Primary Antibodies
Clone Name:	R04-7A4
Applications:	IF, WB
Recommended Dilution:	WB: 1/1000 ICC/IF: 1/20
Reactivity:	Mouse, Rat
Host:	Rabbit
Isotype:	IgG
Clonality:	Monoclonal
Immunogen:	A synthetic peptide of human PFKL
Formulation:	50mM Tris-Glycine(pH 7.4), 0.15M NaCl, 40% Glycerol, 0.01% Sodium azide and 0.05% BSA
Concentration:	lot specific
Purification:	Affinity Purified
Conjugation:	Unconjugated
Storage:	Store at 4°C short term. Aliquot and store at -20°C long term. Avoid freeze/thaw cycles.
Stability:	1 year
Predicted Protein Size:	Calculated MW: 85 kDa; Observed MW: 85 kDa
Gene Name:	phosphofructokinase, liver type
Database Link:	<a href="#">P17858</a>
Background:	Swiss-Prot Acc.P17858.Catalyzes the phosphorylation of D-fructose 6-phosphate to fructose 1,6-bisphosphate by ATP, the first committing step of glycolysis.
Synonyms:	DKFZp686G1648; DKFZp686L2097; FLJ40909; PFK-B; Phosphohexokinase


[View online »](#)

## Product images:



Western blot analysis of PFKL in C6, 3T3 lysates using PFKL antibody.