

Product datasheet for **TA384957M**

PBP (PEBP1) Rabbit Monoclonal Antibody [Clone ID: R09-4C5]

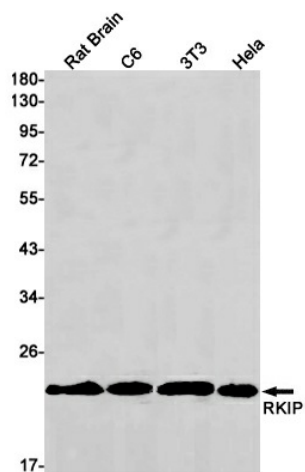
Product data:

Product Type:	Primary Antibodies
Clone Name:	R09-4C5
Applications:	IHC, IP, WB
Recommended Dilution:	WB: 1/1000-1/2000 IHC: 1/50-1/200 IP: 1/20
Reactivity:	Human, Mouse, Rat
Host:	Rabbit
Isotype:	IgG
Clonality:	Monoclonal
Immunogen:	A synthetic peptide of human RKIP
Formulation:	50mM Tris-Glycine(pH 7.4), 0.15M NaCl, 40% Glycerol, 0.01% Sodium azide and 0.05% BSA
Concentration:	lot specific
Purification:	Affinity Purified
Conjugation:	Unconjugated
Storage:	Store at 4°C short term. Aliquot and store at -20°C long term. Avoid freeze/thaw cycles.
Stability:	1 year
Predicted Protein Size:	Calculated MW: 21 kDa; Observed MW: 21 kDa
Gene Name:	phosphatidylethanolamine binding protein 1
Database Link:	Entrez Gene 5037 Human P30086
Background:	Swiss-Prot Acc.P30086.Binds ATP, opioids and phosphatidylethanolamine. Has lower affinity for phosphatidylinositol and phosphatidylcholine. Serine protease inhibitor which inhibits thrombin, neuropsin and chymotrypsin but not trypsin, tissue type plasminogen activator and elastase . Inhibits the kinase activity of RAF1 by inhibiting its activation and by dissociating the RAF1/MEK complex and acting as a competitive inhibitor of MEK phosphorylation.

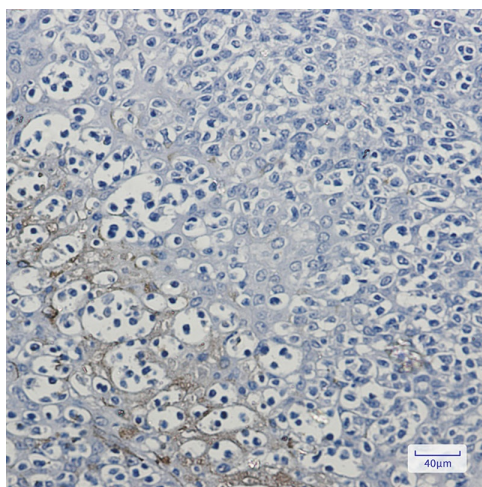

[View online »](#)

Synonyms: HCNP; HCNPpp; PBP; PEBP; PEBP-1; RKIP

Product images:



Western blot analysis of RKIP in rat Brain, C6, 3T3, HeLa lysates using RKIP antibody.



Immunohistochemistry analysis of paraffin-embedded Human tonsil using RKIP antibody. High-pressure and temperature Sodium Citrate pH 6.0 was used for antigen retrieval.