

Product datasheet for **TA384956S**

DPS1 (PDSS1) Rabbit Monoclonal Antibody [Clone ID: R07-2H7]

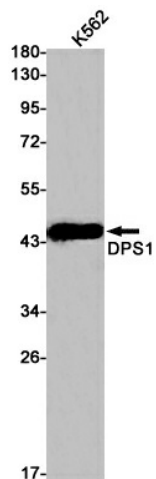
Product data:

Product Type:	Primary Antibodies
Clone Name:	R07-2H7
Applications:	IP, WB
Recommended Dilution:	WB: 1/1000 IP: 1/20
Reactivity:	Human
Host:	Rabbit
Isotype:	IgG
Clonality:	Monoclonal
Immunogen:	A synthetic peptide of human DPS1
Formulation:	50mM Tris-Glycine(pH 7.4), 0.15M NaCl, 40% Glycerol, 0.01% Sodium azide and 0.05% BSA
Concentration:	lot specific
Purification:	Affinity Purified
Conjugation:	Unconjugated
Storage:	Store at 4°C short term. Aliquot and store at -20°C long term. Avoid freeze/thaw cycles.
Stability:	1 year
Predicted Protein Size:	Calculated MW: 46 kDa; Observed MW: 46 kDa
Gene Name:	prenyl (decaprenyl) diphosphate synthase, subunit 1
Database Link:	Entrez Gene 23590 Human Q5T2R2
Background:	Swiss-Prot Acc.Q5T2R2.Decaprenyl-diphosphate synthase subunit 1
Synonyms:	COQ1; DPS; DPS1; hDPS1; MGC70953; RP13-16H11.3; SPS; TPRT; TPT; trans-prenyltransferase



[View online »](#)

Product images:



Western blot analysis of DPS1 in K562 lysates using DPS1 antibody.