

Product datasheet for **TA384954**

PDPN Rabbit Polyclonal Antibody

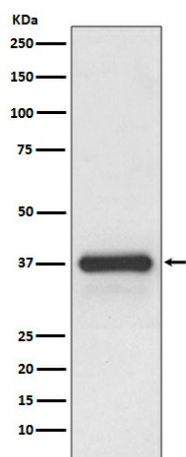
Product data:

Product Type:	Primary Antibodies
Applications:	WB
Recommended Dilution:	WB: 1/500-1/2000
Reactivity:	Human, Mouse, Rat
Host:	Rabbit
Isotype:	IgG
Clonality:	Polyclonal
Immunogen:	A synthesized peptide derived from human Podoplanin
Formulation:	Rabbit IgG in phosphate buffered saline , pH 7.4, 150mM NaCl, 0.02% sodium azide and 50% glycerol.
Concentration:	lot specific
Purification:	Affinity Chromatography
Conjugation:	Unconjugated
Storage:	Store at 4°C short term. Aliquot and store at -20°C long term. Avoid freeze/thaw cycles.
Stability:	1 year
Predicted Protein Size:	36kDa
Gene Name:	podoplanin
Database Link:	Entrez Gene 10630 Human Q86YL7
Background:	Swiss-Prot Acc.Q86YL7.May be involved in cell migration and/or actin cytoskeleton organization. When expressed in keratinocytes, induces changes in cell morphology with transfected cells showing an elongated shape, numerous membrane protrusions, major reorganization of the actin cytoskeleton, increased motility and decreased cell adhesion. Required for normal lung cell proliferation and alveolus formation at birth. Induces platelet aggregation.
Synonyms:	aggrus; GP36; Gp38; GP40; HT1A-1; hT1alpha-1; hT1alpha-2; OTS8; PA2.26; podoplanin; T1-alpha; T1A; T1A-2



[View online »](#)

Product images:



Western blot analysis of Podoplanin in Human placenta lysates using Podoplanin antibody.