

## Product datasheet for **TA384952S**

### **PDLIM7 Rabbit Monoclonal Antibody [Clone ID: R05-5A1]**

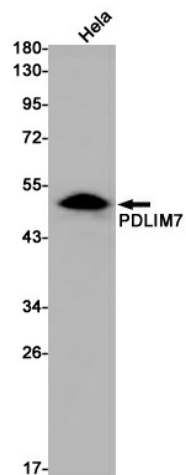
#### **Product data:**

Product Type:	Primary Antibodies
Clone Name:	R05-5A1
Applications:	WB
Recommended Dilution:	WB: 1/1000
Reactivity:	Human
Host:	Rabbit
Isotype:	IgG
Clonality:	Monoclonal
Immunogen:	Recombinant protein of human PDLIM7
Formulation:	50mM Tris-Glycine(pH 7.4), 0.15M NaCl, 40% Glycerol, 0.01% Sodium azide and 0.05% BSA
Concentration:	lot specific
Purification:	Affinity Purified
Conjugation:	Unconjugated
Storage:	Store at 4°C short term. Aliquot and store at -20°C long term. Avoid freeze/thaw cycles.
Stability:	1 year
Predicted Protein Size:	Calculated MW: 50 kDa; Observed MW: 50 kDa
Gene Name:	PDZ and LIM domain 7
Database Link:	<a href="#">Entrez Gene 9260 Human Q9NR12</a>
Background:	Swiss-Prot Acc.Q9NR12.May function as a scaffold on which the coordinated assembly of proteins can occur. May play a role as an adapter that, via its PDZ domain, localizes LIM-binding proteins to actin filaments of both skeletal muscle and nonmuscle tissues. Involved in both of the two fundamental mechanisms of bone formation, direct bone formation (e.g. embryonic flat bones mandible and cranium), and endochondral bone formation (e.g. embryonic long bone development). Plays a role during fracture repair. Involved in BMP6 signaling pathway .
Synonyms:	1110003B01Rik; ENIGMA; LMP; LMP1



[View online »](#)

## Product images:



Western blot analysis of PDLIM7 in HeLa lysates using PDLIM7 antibody.