

Product datasheet for **TA384950**

PDLIM1 Rabbit Monoclonal Antibody [Clone ID: R01-7A8]

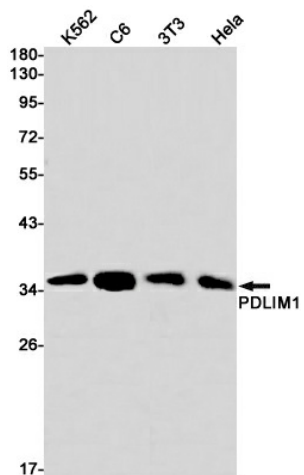
Product data:

Product Type:	Primary Antibodies
Clone Name:	R01-7A8
Applications:	IF, IP, WB
Recommended Dilution:	WB: 1/1000 ICC/IF: 1/50-1/100 IP: 1/20
Reactivity:	Human, Mouse, Rat
Host:	Rabbit
Isotype:	IgG
Clonality:	Monoclonal
Immunogen:	A synthetic peptide of human PDLIM1
Formulation:	50mM Tris-Glycine(pH 7.4), 0.15M NaCl, 40% Glycerol, 0.01% Sodium azide and 0.05% BSA
Concentration:	lot specific
Purification:	Affinity Purified
Conjugation:	Unconjugated
Storage:	Store at 4°C short term. Aliquot and store at -20°C long term. Avoid freeze/thaw cycles.
Stability:	1 year
Predicted Protein Size:	Calculated MW: 36 kDa; Observed MW: 36 kDa
Gene Name:	PDZ and LIM domain 1
Database Link:	Entrez Gene 9124 Human O00151
Background:	Swiss-Prot Acc.O00151.Cytoskeletal protein that may act as an adapter that brings other proteins (like kinases) to the cytoskeleton (PubMed:10861853). Involved in assembly, disassembly and directioning of stress fibers in fibroblasts. Required for the localization of ACTN1 and PALLD to stress fibers. Required for cell migration and in maintaining cell polarity of fibroblasts .
Synonyms:	CLIM1; CLP-36; CLP36; elfin; enigma; hCLIM1

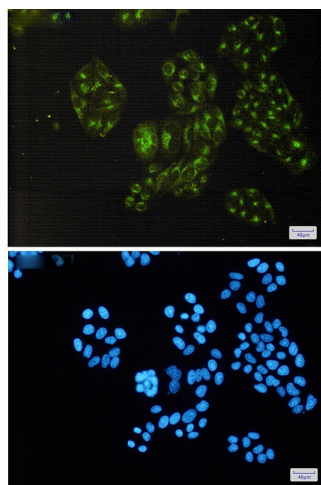


[View online »](#)

Product images:



Western blot analysis of PDLIM1 in K562, C6, 3T3, HeLa lysates using PDLIM1 antibody.



Immunocytochemistry analysis of PDLIM1(green) in HeLa using PDLIM1 antibody, and DAPI(blue)