

Product datasheet for **TA384948S**

PDHA1 Rabbit Monoclonal Antibody [Clone ID: R06-1J4]

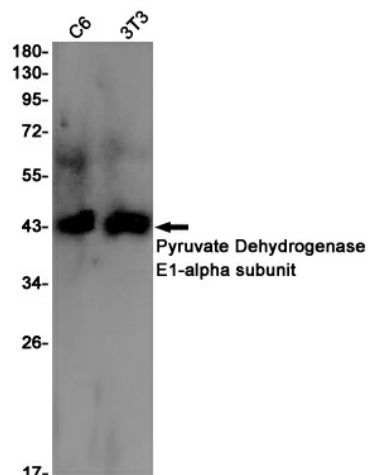
Product data:

Product Type:	Primary Antibodies
Clone Name:	R06-1J4
Applications:	IF, IP, WB
Recommended Dilution:	WB: 1/1000-1/2000 ICC/IF: 1/20-1/100 IP: 1/20-1/50
Reactivity:	Human, Mouse, Rat
Host:	Rabbit
Isotype:	IgG
Clonality:	Monoclonal
Immunogen:	A synthetic peptide of human Pyruvate Dehydrogenase E1-alpha subunit
Formulation:	50mM Tris-Glycine(pH 7.4), 0.15M NaCl, 40% Glycerol, 0.01% Sodium azide and 0.05% BSA
Concentration:	lot specific
Purification:	Affinity Purified
Conjugation:	Unconjugated
Storage:	Store at 4°C short term. Aliquot and store at -20°C long term. Avoid freeze/thaw cycles.
Stability:	1 year
Predicted Protein Size:	Calculated MW: 43 kDa; Observed MW: 43 kDa
Gene Name:	pyruvate dehydrogenase (lipoamide) alpha 1
Database Link:	Entrez Gene 5160 Human P08559
Background:	Swiss-Prot Acc.P08559.The pyruvate dehydrogenase complex catalyzes the overall conversion of pyruvate to acetyl-CoA and CO ₂ , and thereby links the glycolytic pathway to the tricarboxylic cycle.
Synonyms:	PDHA; PDHCE1A; PHE1A

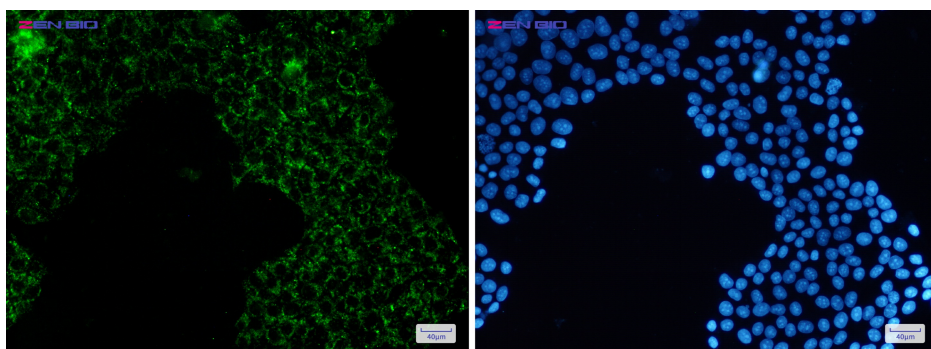


[View online »](#)

Product images:



Western blot detection of Pyruvate Dehydrogenase E1-alpha subunit in C6,3T3 cell lysates using Pyruvate Dehydrogenase E1-alpha subunit Rabbit mAb(1:1000 diluted).Predicted band size:43kDa.Observed band size:43kDa.



Immunocytochemistry of Pyruvate Dehydrogenase E1-alpha subunit(green) in HeLa cells using Pyruvate Dehydrogenase E1-alpha subunit Rabbit mAb at dilution 1/50, and DAPI(blue)