

Product datasheet for **TA384945**

PDGF Receptor beta (PDGFRB) Rabbit Polyclonal Antibody

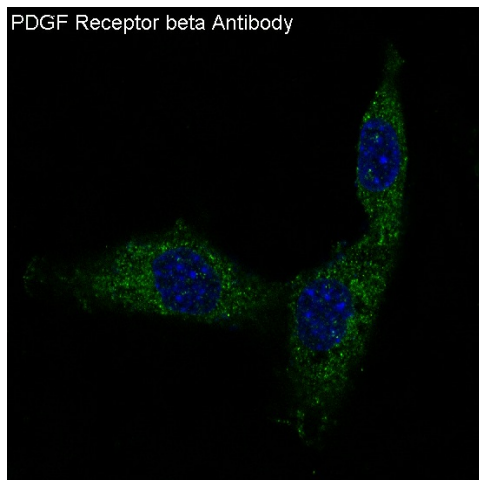
Product data:

Product Type:	Primary Antibodies
Applications:	IF, IHC, IP, WB
Recommended Dilution:	WB: 1/500-1/2000 IHC: 1/50-1/200 ICC/IF: 1/50-1/200 IP: 1/50
Reactivity:	Human, Mouse, Rat
Host:	Rabbit
Isotype:	IgG
Clonality:	Polyclonal
Immunogen:	A synthesized peptide derived from human PDGF Receptor beta
Formulation:	Rabbit IgG in phosphate buffered saline , pH 7.4, 150mM NaCl, 0.02% sodium azide and 50% glycerol.
Concentration:	lot specific
Purification:	Affinity Chromatography
Conjugation:	Unconjugated
Storage:	Store at 4°C short term. Aliquot and store at -20°C long term. Avoid freeze/thaw cycles.
Stability:	1 year
Predicted Protein Size:	170kDa
Gene Name:	platelet derived growth factor receptor beta
Database Link:	Entrez Gene 5159 Human P09619
Background:	Swiss-Prot Acc.P09619.This gene encodes a cell surface tyrosine kinase receptor for members of the platelet-derived growth factor family. These growth factors are mitogens for cells of mesenchymal origin. The identity of the growth factor bound to a receptor monomer determines whether the functional receptor is a homodimer or a heterodimer, composed of both platelet-derived growth factor receptor alpha and beta polypeptides.
Synonyms:	CD140b; JTK12; PDGF-R-beta; PDGFR; PDGFR1

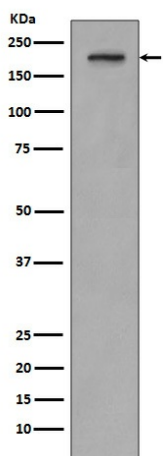


[View online »](#)

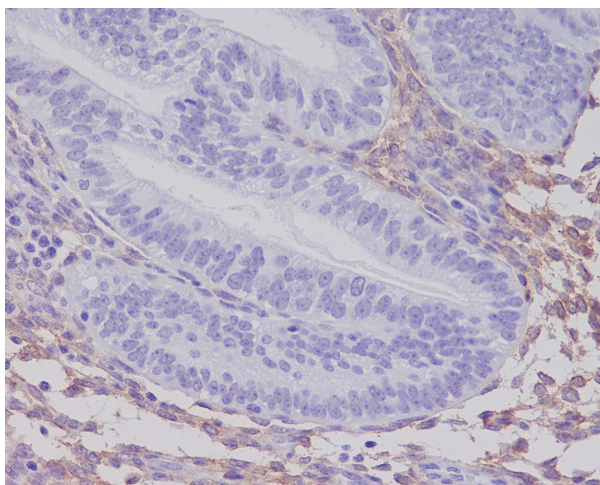
Product images:



Immunofluorescent analysis of 3T3 cells, using PDGF Receptor beta Antibody.



Western blot analysis of PDGF Receptor beta expression in SH-SY5Y cell lysate.



Immunohistochemical analysis of paraffin-embedded human uterus, using PDGF Receptor beta Antibody.