

## Product datasheet for **TA384943S**

### **PDE1B Rabbit Monoclonal Antibody [Clone ID: R03-6F9]**

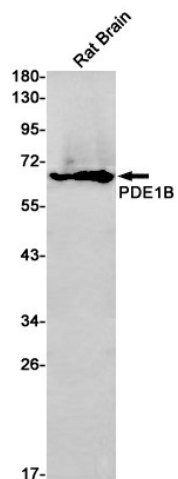
#### **Product data:**

Product Type:	Primary Antibodies
Clone Name:	R03-6F9
Applications:	WB
Recommended Dilution:	WB: 1/1000
Reactivity:	Human, Mouse, Rat
Host:	Rabbit
Isotype:	IgG
Clonality:	Monoclonal
Immunogen:	Recombinant protein of human PDE1B
Formulation:	50mM Tris-Glycine(pH 7.4), 0.15M NaCl, 40% Glycerol, 0.01% Sodium azide and 0.05% BSA
Concentration:	lot specific
Purification:	Affinity Purified
Conjugation:	Unconjugated
Storage:	Store at 4°C short term. Aliquot and store at -20°C long term. Avoid freeze/thaw cycles.
Stability:	1 year
Predicted Protein Size:	Calculated MW: 61 kDa; Observed MW: 61 kDa
Gene Name:	phosphodiesterase 1B
Database Link:	<a href="#">Entrez Gene 5153 Human Q01064</a>
Background:	Swiss-Prot Acc.Q01064.Cyclic nucleotide phosphodiesterase with a dual-specificity for the second messengers cAMP and cGMP, which are key regulators of many important physiological processes. Has a preference for cGMP as a substrate.
Synonyms:	PDE1B1; PDES1B; Phosphodiesterase-1B



[View online »](#)

## Product images:



Western blot analysis of PDE1B in rat Brain lysates using PDE1B antibody.