

Product datasheet for **TA384940**

ALIX (PDCD6IP) Rabbit Polyclonal Antibody

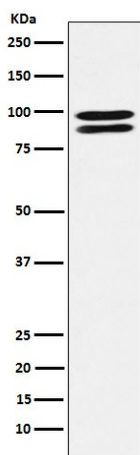
Product data:

Product Type:	Primary Antibodies
Applications:	FC, WB
Recommended Dilution:	WB: 1/500-1/2000 FC: 1/100
Reactivity:	Human, Mouse, Rat
Host:	Rabbit
Isotype:	IgG
Clonality:	Polyclonal
Immunogen:	A synthesized peptide derived from human ALIX
Formulation:	Rabbit IgG in phosphate buffered saline , pH 7.4, 150mM NaCl, 0.02% sodium azide and 50% glycerol.
Concentration:	lot specific
Purification:	Affinity Chromatography
Conjugation:	Unconjugated
Storage:	Store at 4°C short term. Aliquot and store at -20°C long term. Avoid freeze/thaw cycles.
Stability:	1 year
Predicted Protein Size:	97kDa
Gene Name:	programmed cell death 6 interacting protein
Database Link:	Entrez Gene 10015 Human Q8WUM4
Background:	Swiss-Prot Acc.Q8WUM4Human.Class E VPS protein involved in concentration and sorting of cargo proteins of the multivesicular body (MVB) for incorporation into intraluminal vesicles (ILVs) that are generated by invagination and scission from the limiting membrane of the endosome.
Synonyms:	AIP1; Alix; DRIP4; Hp95; KIAA1375; MGC17003



[View online »](#)

Product images:



Western blot analysis of ALIX in K562 lysates using ALIX antibody.