

## Product datasheet for **TA384939S**

### PCYT1A Rabbit Monoclonal Antibody [Clone ID: R02-6G9]

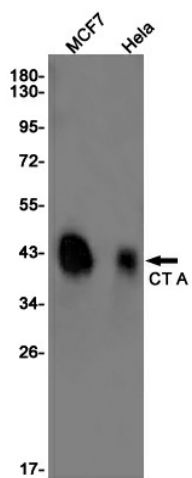
#### Product data:

Product Type:	Primary Antibodies
Clone Name:	R02-6G9
Applications:	WB
Recommended Dilution:	WB: 1/1000-1/5000
Reactivity:	Human
Host:	Rabbit
Isotype:	IgG
Clonality:	Monoclonal
Immunogen:	A synthetic peptide of human CT A
Formulation:	50mM Tris-Glycine(pH 7.4), 0.15M NaCl, 40% Glycerol, 0.01% Sodium azide and 0.05% BSA
Concentration:	lot specific
Purification:	Affinity Purified
Conjugation:	Unconjugated
Storage:	Store at 4°C short term. Aliquot and store at -20°C long term. Avoid freeze/thaw cycles.
Stability:	1 year
Predicted Protein Size:	Calculated MW: 42 kDa; Observed MW: 42 kDa
Gene Name:	phosphate cytidyltransferase 1, choline, alpha
Database Link:	<a href="#">Entrez Gene 5130 Human P49585</a>
Background:	Swiss-Prot Acc.P49585.Controls phosphatidylcholine synthesis.
Synonyms:	CCT-alpha; CCTA; CT; CTA; CTPCT; OTTHUMP00000208443; PCYT1



[View online »](#)

## Product images:



Western blot analysis of CT A in MCF-7, HeLa lysates using CT A antibody.