

## Product datasheet for **TA384937M**

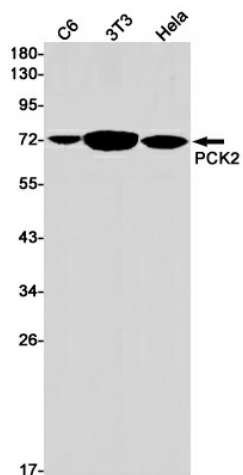
### **PCK2 Rabbit Monoclonal Antibody [Clone ID: R07-8K6]**

#### **Product data:**

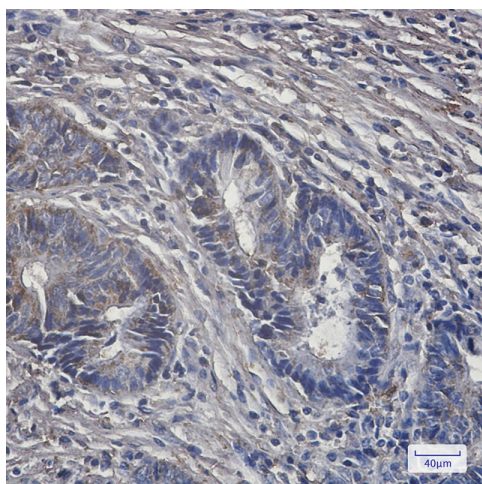
Product Type:	Primary Antibodies
Clone Name:	R07-8K6
Applications:	IF, IHC, WB
Recommended Dilution:	WB: 1/1000-1/5000 IHC: 1/100 ICC/IF: 1/100
Reactivity:	Human, Mouse, Rat
Host:	Rabbit
Isotype:	IgG
Clonality:	Monoclonal
Immunogen:	A synthetic peptide of human PCK2
Formulation:	50mM Tris-Glycine(pH 7.4), 0.15M NaCl, 40% Glycerol, 0.01% Sodium azide and 0.05% BSA
Concentration:	lot specific
Purification:	Affinity Purified
Conjugation:	Unconjugated
Storage:	Store at 4°C short term. Aliquot and store at -20°C long term. Avoid freeze/thaw cycles.
Stability:	1 year
Predicted Protein Size:	Calculated MW: 71 kDa; Observed MW: 71 kDa
Database Link:	<a href="#">Q16822</a>
Background:	Swiss-Prot Acc.Q16822.Catalyzes the conversion of oxaloacetate (OAA) to phosphoenolpyruvate (PEP), the rate-limiting step in the metabolic pathway that produces glucose from lactate and other precursors derived from the citric acid cycle.

[View online »](#)

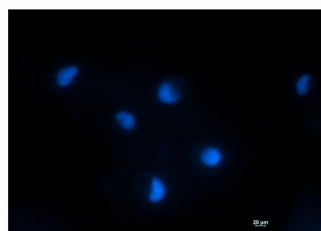
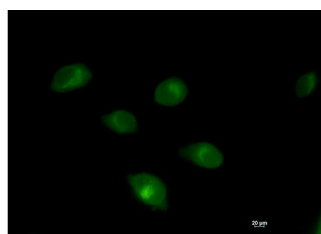
## Product images:



Western blot analysis of PCK2 in C6, 3T3, HeLa lysates using PCK2 antibody.



Immunohistochemistry analysis of paraffin-embedded Human colon cancer tissue using PCK2 antibody. High-pressure and temperature Sodium Citrate pH 6.0 was used for antigen retrieval.



Immunocytochemistry analysis of PCK2 (green) in HT-1080 using PCK2 antibody, and DAPI (blue).