

Product datasheet for **TA384931S**

PARP1 Rabbit Polyclonal Antibody

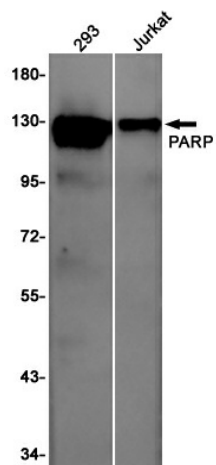
Product data:

Product Type:	Primary Antibodies
Applications:	FC, IHC, WB
Recommended Dilution:	WB: 1/2000 IHC: 1/20 FC: 1/20
Reactivity:	Human
Host:	Rabbit
Isotype:	IgG
Clonality:	Polyclonal
Immunogen:	A synthetic peptide of human PARP
Formulation:	50mM Tris-Glycine(pH 7.4), 0.15M NaCl, 40% Glycerol, 0.01% Sodium azide and 0.05% BSA
Concentration:	lot specific
Purification:	Affinity Purified
Conjugation:	Unconjugated
Storage:	Store at 4°C short term. Aliquot and store at -20°C long term. Avoid freeze/thaw cycles.
Stability:	1 year
Predicted Protein Size:	Calculated MW: 113 kDa; Observed MW: 116,24 kDa
Gene Name:	poly(ADP-ribose) polymerase 1
Database Link:	Entrez Gene 142 Human P09874
Background:	Swiss-Prot Acc.P09874.
Synonyms:	ADPRT; ADPRT1; pADPRT-1; PARP; PARP-1; poly(ADP-ribosyl)transferase; PPOL

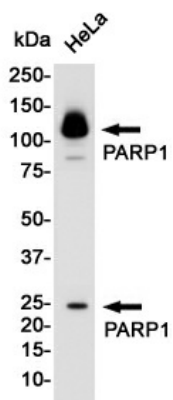


[View online »](#)

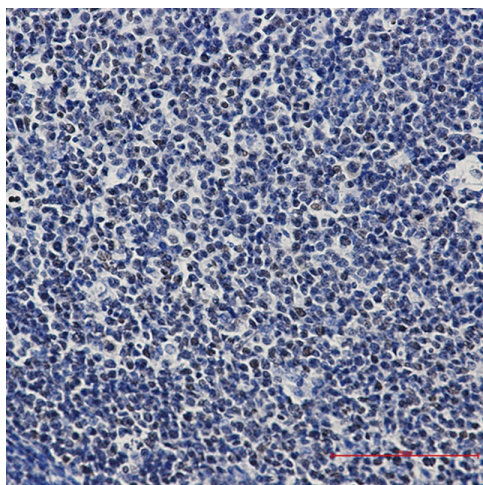
Product images:



Western blot analysis of PARP in 293, Jurkat lysates using PARP1 antibody.



Western blot analysis of PARP in HeLa lysates using PARP antibody.



Immunohistochemistry analysis of paraffin-embedded Human tonsil using PARP1 antibody. High-pressure and temperature Sodium Citrate pH 6.0 was used for antigen retrieval.