

Product datasheet for **TA384930**

PARK7 Rabbit Polyclonal Antibody

Product data:

Product Type:	Primary Antibodies
Applications:	FC, IF, IHC, IP, WB
Recommended Dilution:	WB: 1/1000-1/5000 IHC: 1/50-1/200 ICC/IF: 1/50-1/200 IP: 1/20 FC: 1/50
Reactivity:	Human, Mouse, Rat
Host:	Rabbit
Isotype:	IgG
Clonality:	Polyclonal
Immunogen:	A synthesized peptide derived from human PARK7
Formulation:	Rabbit IgG in phosphate buffered saline , pH 7.4, 150mM NaCl, 0.02% sodium azide and 50% glycerol.
Concentration:	lot specific
Purification:	Affinity Chromatography
Conjugation:	Unconjugated
Storage:	Store at 4°C short term. Aliquot and store at -20°C long term. Avoid freeze/thaw cycles.
Stability:	1 year
Predicted Protein Size:	20kDa
Gene Name:	Parkinsonism associated deglycase
Database Link:	Entrez Gene 11315 Human Q99497



[View online »](#)

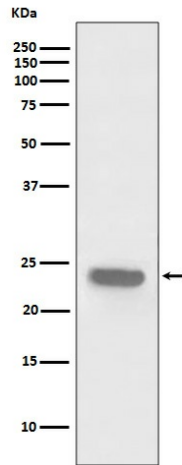
Background:

Swiss-Prot Acc.Q99497.Plays a role in regulating expression or stability of the mitochondrial uncoupling proteins SLC25A14 and SLC25A27 in dopaminergic neurons of the substantia nigra pars compacta and attenuates the oxidative stress induced by calcium entry into the neurons via L-type channels during pacemaking. It cooperates with Ras to increase cell transformation, it positively regulates transcription of the androgen receptor, and it may function as an indicator of oxidative stress.

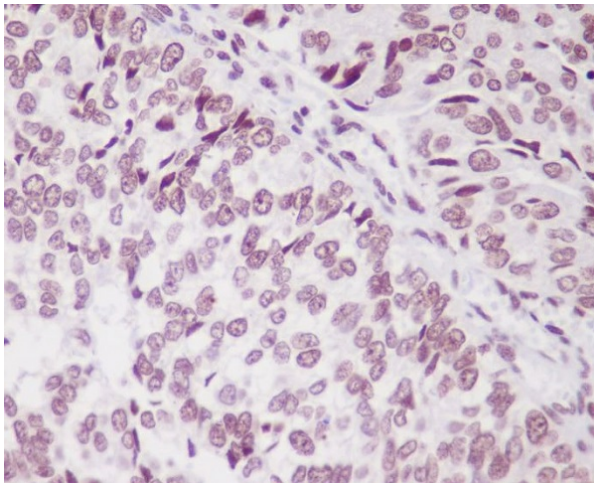
Synonyms:

DJ-1; DJ1; FLJ27376; FLJ34360; FLJ92274; OTTHUMP00000001350; OTTHUMP00000001351

Product images:



Western blot analysis of PARK7 in HeLa lysates using PARK7/DJ1 antibody.



Immunohistochemistry analysis of paraffin-embedded Human bladder cancer using PARK7 antibody.High-pressure and temperature Sodium Citrate pH 6.0 was used for antigen retrieval.