

Product datasheet for **TA384928**

PAK4 Rabbit Polyclonal Antibody

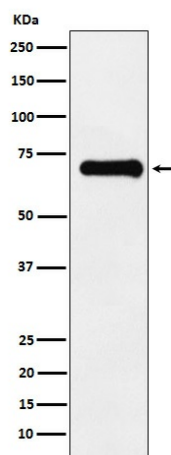
Product data:

Product Type:	Primary Antibodies
Applications:	FC, WB
Recommended Dilution:	WB: 1/500-1/2000 FC: 1/200
Reactivity:	Human, Mouse, Rat
Host:	Rabbit
Isotype:	IgG
Clonality:	Polyclonal
Immunogen:	A synthesized peptide derived from human Phospho-PAK4 + PAK5 + PAK6 (S474 + S560 + S602) (Phosphorylated)
Formulation:	Rabbit IgG in phosphate buffered saline , pH 7.4, 150mM NaCl, 0.02% sodium azide and 50% glycerol.
Concentration:	lot specific
Purification:	Affinity Chromatography
Conjugation:	Unconjugated
Storage:	Store at 4°C short term. Aliquot and store at -20°C long term. Avoid freeze/thaw cycles.
Stability:	1 year
Predicted Protein Size:	64, 80, 75 kDa
Database Link:	O96013
Background:	Swiss-Prot Acc.O96013,Q9P286,Q9NQU5.Serine/threonine protein kinase that plays a role in a variety of different signaling pathways including cytoskeleton regulation, cell migration, growth, proliferation or cell survival.



[View online »](#)

Product images:



Western blot analysis of Phospho-PAK4 + PAK5 + PAK6 (S474 + S560 + S602) in U87-MG lysates using Phospho-PAK4/5/6 (Ser474/Ser560/Ser602) antibody.