

Product datasheet for **TA384926**

PAK2 Rabbit Polyclonal Antibody

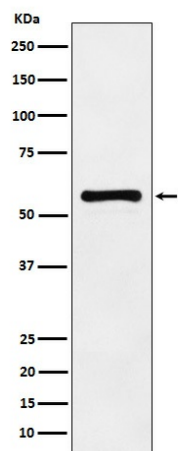
Product data:

Product Type:	Primary Antibodies
Applications:	FC, IF, IHC, WB
Recommended Dilution:	WB: 1/500-1/2000 IHC: 1/100-1/500 ICC/IF: 1/50-1/200 FC: 1/80
Reactivity:	Human, Mouse, Rat
Host:	Rabbit
Isotype:	IgG
Clonality:	Polyclonal
Immunogen:	A synthesized peptide derived from human PAK2
Formulation:	Rabbit IgG in phosphate buffered saline , pH 7.4, 150mM NaCl, 0.02% sodium azide and 50% glycerol.
Concentration:	lot specific
Purification:	Affinity Chromatography
Conjugation:	Unconjugated
Storage:	Store at 4°C short term. Aliquot and store at -20°C long term. Avoid freeze/thaw cycles.
Stability:	1 year
Predicted Protein Size:	61kDa
Gene Name:	p21 (RAC1) activated kinase 2
Database Link:	Entrez Gene 5062 Human Q13177
Background:	Swiss-Prot Acc.Q13177.The activated kinase acts on a variety of targets. Phosphorylates ribosomal protein S6, histone H4 and myelin basic protein. Full length PAK 2 stimulates cell survival and cell growth. The process is, at least in part, mediated by phosphorylation and inhibition of pro-apoptotic BAD.
Synonyms:	Gamma-PAK; p58; PAK-2; PAK65; PAKgamma



[View online »](#)

Product images:



Western blot analysis of PAK2 in HeLa lysates using PAK2 antibody.