

## Product datasheet for **TA384924**

### PAK1 Rabbit Polyclonal Antibody

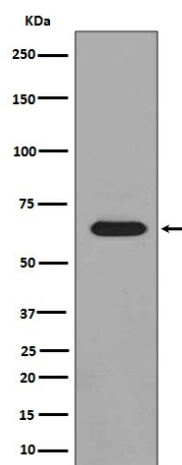
#### Product data:

Product Type:	Primary Antibodies
Applications:	FC, IF, IHC, IP, WB
Recommended Dilution:	WB: 1/1000-1/10000 IHC: 1/50-1/200 ICC/IF: 1/50-1/200 IP: 1/50 FC: 1/50
Reactivity:	Human, Mouse, Rat
Host:	Rabbit
Isotype:	IgG
Clonality:	Polyclonal
Immunogen:	A synthesized peptide derived from human Phospho-PAK1/2/3 (S144+S141+S139) (Phosphorylated)
Formulation:	Rabbit IgG in phosphate buffered saline , pH 7.4, 150mM NaCl, 0.02% sodium azide and 50% glycerol.
Concentration:	lot specific
Purification:	Affinity Chromatography
Conjugation:	Unconjugated
Storage:	Store at 4°C short term. Aliquot and store at -20°C long term. Avoid freeze/thaw cycles.
Stability:	1 year
Predicted Protein Size:	65kDa
Database Link:	<a href="#">O75914</a>
Background:	Swiss-Prot Acc.O75914,Q13153,Q13177.PAK proteins are critical effectors that link RhoGTPases to cytoskeleton reorganization and nuclear signaling. PAK proteins, a family of serine/threonine p21-activating kinases, include PAK1, PAK2, PAK3 and PAK4.

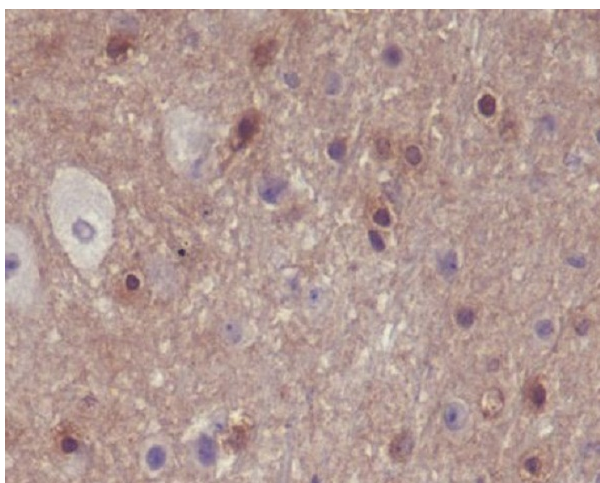


[View online »](#)

## Product images:



Western blot analysis of Phospho-PAK1/2/3 in HeLa lysates treated with lambda phosphatase using Phospho-PAK1/2/3 (Ser144/Ser141/Ser154) antibody.



Immunohistochemistry analysis of paraffin-embedded mouse brain using Phospho-PAK1/2/3 (S144+S141+S139) antibody. High-pressure and temperature Sodium Citrate pH 6.0 was used for antigen retrieval.