

Product datasheet for **TA384922M**

PABPN1 Rabbit Monoclonal Antibody [Clone ID: R02-8B1]

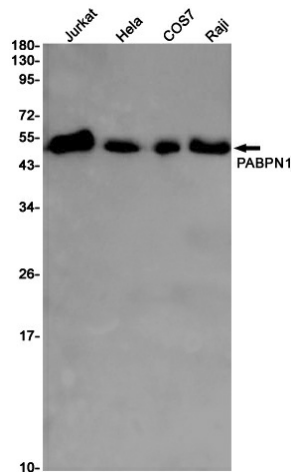
Product data:

Product Type:	Primary Antibodies
Clone Name:	R02-8B1
Applications:	IF, IHC, IP, WB
Recommended Dilution:	WB: 1/1000-1/5000 IHC: 1/20-1/100 ICC/IF: 1/20-1/50 IP: 1/20
Reactivity:	Human, Mouse
Host:	Rabbit
Isotype:	IgG
Clonality:	Monoclonal
Immunogen:	A synthetic peptide of human PABPN1
Formulation:	50mM Tris-Glycine(pH 7.4), 0.15M NaCl, 40% Glycerol, 0.01% Sodium azide and 0.05% BSA
Concentration:	lot specific
Purification:	Affinity Purified
Conjugation:	Unconjugated
Storage:	Store at 4°C short term. Aliquot and store at -20°C long term. Avoid freeze/thaw cycles.
Stability:	1 year
Predicted Protein Size:	Calculated MW: 33 kDa; Observed MW: 50 kDa
Database Link:	Q86U42

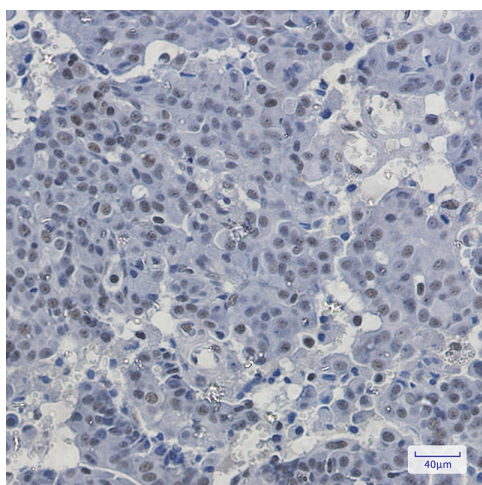
[View online »](#)

Background:

Swiss-Prot Acc.Q86U42. Involved in the 3'-end formation of mRNA precursors (pre-mRNA) by the addition of a poly(A) tail of 200-250 nt to the upstream cleavage product. Stimulates poly(A) polymerase (PAPOLA) conferring processivity on the poly(A) tail elongation reaction and controls also the poly(A) tail length. Increases the affinity of poly(A) polymerase for RNA. Is also present at various stages of mRNA metabolism including nucleocytoplasmic trafficking and nonsense-mediated decay (NMD) of mRNA. Cooperates with SKIP to synergistically activate E-box-mediated transcription through MYOD1 and may regulate the expression of muscle-specific genes (PubMed:11371506). Binds to poly(A) and to poly(G) with high affinity. May protect the poly(A) tail from degradation. Subunit of the trimeric poly(A) tail exosome targeting (PAXT) complex, a complex that directs a subset of long and polyadenylated poly(A) RNAs for exosomal degradation. The RNA exosome is fundamental for the degradation of RNA in eukaryotic nuclei. Substrate targeting is facilitated by its cofactor MTREX, which links to RNA-binding protein adapters (PubMed:27871484).

Product images:


Western blot analysis of PABPN1 in Jurkat, HeLa, COS7, Raji lysates using PABPN1 antibody.



Immunohistochemistry analysis of paraffin-embedded Human breast cancer using PABPN1 antibody. High-pressure and temperature Sodium Citrate pH 6.0 was used for antigen retrieval.