

## Product datasheet for **TA384919**

### LIS1 (PAFAH1B1) Rabbit Polyclonal Antibody

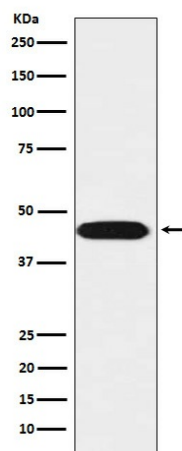
#### Product data:

Product Type:	Primary Antibodies
Applications:	WB
Recommended Dilution:	WB: 1/500-1/2000
Reactivity:	Human, Mouse, Rat
Host:	Rabbit
Isotype:	IgG
Clonality:	Polyclonal
Immunogen:	A synthesized peptide derived from human LIS1
Formulation:	Rabbit IgG in phosphate buffered saline , pH 7.4, 150mM NaCl, 0.02% sodium azide and 50% glycerol.
Concentration:	lot specific
Purification:	Affinity Chromatography
Conjugation:	Unconjugated
Storage:	Store at 4°C short term. Aliquot and store at -20°C long term. Avoid freeze/thaw cycles.
Stability:	1 year
Predicted Protein Size:	47kDa
Gene Name:	platelet activating factor acetylhydrolase 1b regulatory subunit 1
Database Link:	<a href="#">Entrez Gene 5048 Human P43034</a>
Background:	Swiss-Prot Acc.P43034.Required for proper activation of Rho GTPases and actin polymerization at the leading edge of locomoting cerebellar neurons and postmigratory hippocampal neurons in response to calcium influx triggered via NMDA receptors.
Synonyms:	LIS-1; LIS1; LIS2; MDCR; MDS; PAFAH; PAFAHA



[View online »](#)

## Product images:



Western blot analysis of LIS1 in SH-SY5Y lysates using LIS1 antibody.