

Product datasheet for **TA384916**

OTX1 Rabbit Polyclonal Antibody

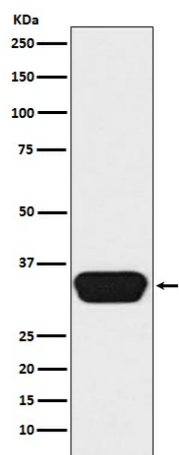
Product data:

Product Type:	Primary Antibodies
Applications:	ChIP, IHC, WB
Recommended Dilution:	WB: 1/500-1/2000 IHC: 1/100-1/500
Reactivity:	Human, Mouse, Rat
Host:	Rabbit
Isotype:	IgG
Clonality:	Polyclonal
Immunogen:	A synthesized peptide derived from human Otx1/2
Formulation:	Rabbit IgG in phosphate buffered saline , pH 7.4, 150mM NaCl, 0.02% sodium azide and 50% glycerol.
Concentration:	lot specific
Purification:	Affinity Chromatography
Conjugation:	Unconjugated
Storage:	Store at 4°C short term. Aliquot and store at -20°C long term. Avoid freeze/thaw cycles.
Stability:	1 year
Predicted Protein Size:	32kDa
Gene Name:	orthodenticle homeobox 1
Database Link:	Entrez Gene 5013 Human P32242
Background:	Swiss-Prot Acc.P32242,P32243.Probably plays a role in the development of the brain and the sense organs. Can bind to the BCD target sequence (BTS): 5'-TCTAATCCC-3'.
Synonyms:	FLJ38361; MGC15736; OTTHUMP00000201938



[View online »](#)

Product images:



Western blot analysis of Otx1/2 in Y79 lysates using OTX1/2 antibody.