

## Product datasheet for **TA384913**

### Ornithine Carbamoyltransferase (OTC) Rabbit Polyclonal Antibody

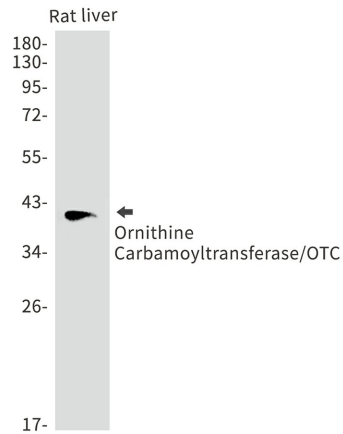
#### Product data:

Product Type:	Primary Antibodies
Applications:	IHC, IP, WB
Recommended Dilution:	WB: 1/1000 IHC: 1/20 IP: 1/20
Reactivity:	Mouse, Rat
Host:	Rabbit
Isotype:	IgG
Clonality:	Polyclonal
Immunogen:	A synthetic peptide of human Ornithine Carbamoyltransferase
Formulation:	50mM Tris-Glycine(pH 7.4), 0.15M NaCl, 40% Glycerol, 0.01% Sodium azide and 0.05% BSA
Concentration:	lot specific
Purification:	Affinity Purified
Conjugation:	Unconjugated
Storage:	Store at 4°C short term. Aliquot and store at -20°C long term. Avoid freeze/thaw cycles.
Stability:	1 year
Predicted Protein Size:	Calculated MW: 40 kDa; Observed MW: 40 kDa
Gene Name:	ornithine carbamoyltransferase
Database Link:	<a href="#">P00480</a>
Background:	Swiss-Prot Acc.P00480.
Synonyms:	MGC129967; MGC129968; MGC138856; OCTD; OTCase

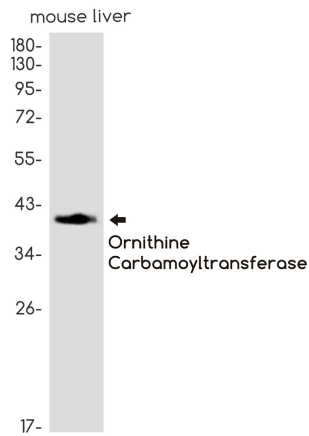


[View online »](#)

Product images:



Western blot analysis of Ornithine Carbamoyltransferase/OTC in rat liver lysates using OTC antibody.



Western blot analysis of Ornithine Carbamoyltransferase/OTC in mouse liver lysates using Ornithine Carbamoyltransferase/OTC antibody.