

Product datasheet for **TA384912**

OR51E2 Rabbit Polyclonal Antibody

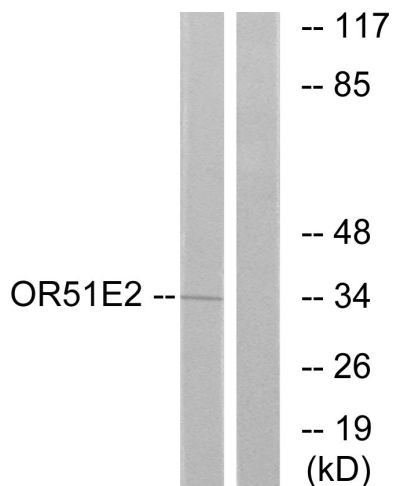
Product data:

Product Type:	Primary Antibodies
Applications:	ELISA, IF, WB
Recommended Dilution:	WB: 1/500-1/2000 IF: 1/200-1/1000 ELISA: 1/10000
Reactivity:	Human, Rat
Host:	Rabbit
Isotype:	IgG
Clonality:	Polyclonal
Immunogen:	The antiserum was produced against synthesized peptide derived from human OR51E2. AA range:221-270
Formulation:	Liquid in PBS containing 50% glycerol, 0.5% BSA and 0.02% sodium azide, pH 7.3.
Concentration:	lot specific
Purification:	Affinity Chromatography
Conjugation:	Unconjugated
Storage:	Store at 4°C short term. Aliquot and store at -20°C long term. Avoid freeze/thaw cycles.
Stability:	1 year
Predicted Protein Size:	Observed MW (kDa):35
Database Link:	Q9H255
Background:	Swiss-Prot Acc.Q9H255.Probable G protein-coupled receptor that is activated by the short chain fatty acids (SCFA) acetate and propionate. In response to SCFA, may positively regulate renin secretion and increase blood pressure (PubMed:23401498). May also be activated by steroid hormones and regulate cell proliferation (PubMed:19389702). May also function as an olfactory receptor being activated by beta-ionone (PubMed:19389702).

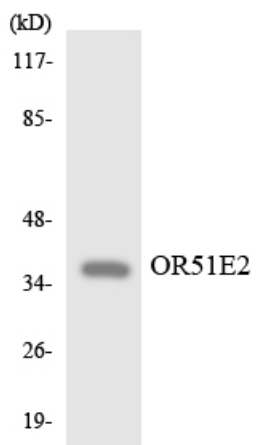


[View online »](#)

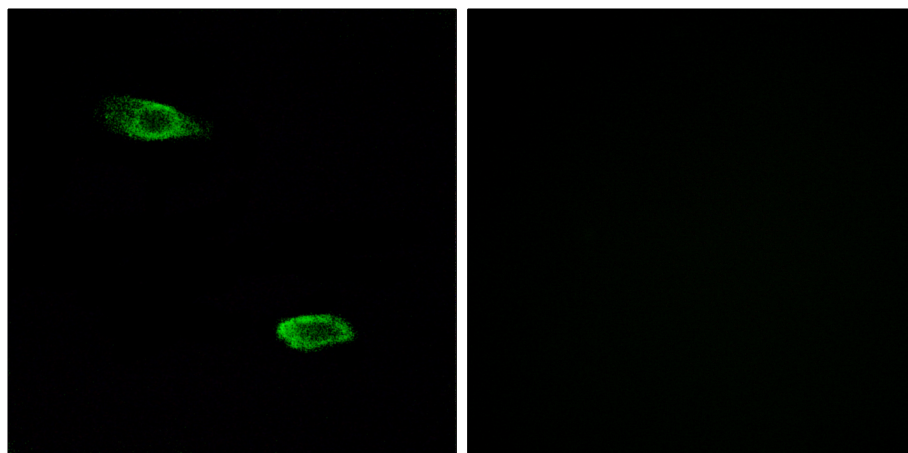
Product images:



Western blot analysis of PSGR in Jurkat lysates using PSGR antibody. The lane on the right is blocked with the synthesized peptide.



Western blot analysis of PSGR in HepG2 lysates using PSGR antibody



Immunofluorescence analysis of PSGR in A549 using PSGR antibody. Sample with blocking peptide on the right.