

## Product datasheet for **TA384906**

### **NUP107 Rabbit Monoclonal Antibody [Clone ID: R06-9K7]**

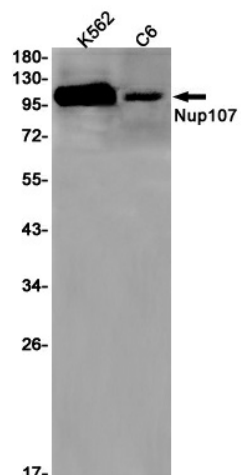
#### **Product data:**

Product Type:	Primary Antibodies
Clone Name:	R06-9K7
Applications:	WB
Recommended Dilution:	WB: 1/2000-1/10000
Reactivity:	Human, Rat
Host:	Rabbit
Isotype:	IgG
Clonality:	Monoclonal
Immunogen:	A synthetic peptide of human Nup107
Formulation:	50mM Tris-Glycine(pH 7.4), 0.15M NaCl, 40% Glycerol, 0.01% Sodium azide and 0.05% BSA
Concentration:	lot specific
Purification:	Affinity Purified
Conjugation:	Unconjugated
Storage:	Store at 4°C short term. Aliquot and store at -20°C long term. Avoid freeze/thaw cycles.
Stability:	1 year
Predicted Protein Size:	Calculated MW: 106 kDa; Observed MW: 107 kDa
Gene Name:	nucleoporin 107kDa
Database Link:	<a href="#">Entrez Gene 57122 Human P57740</a>
Background:	Swiss-Prot Acc.P57740.Plays a role in the nuclear pore complex (NPC) assembly and/or maintenance (PubMed:12552102, PubMed:15229283). Required for the assembly of peripheral proteins into the NPC (PubMed:15229283, PubMed:12552102). May anchor NUP62 to the NPC (PubMed:15229283).
Synonyms:	NUP84



[View online »](#)

## Product images:



Western blot analysis of Nup107 in K562, C6 lysates using NUP107 antibody.