

## Product datasheet for **TA384904M**

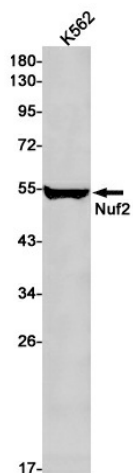
### NUF2 Rabbit Monoclonal Antibody [Clone ID: R07-9E2]

#### Product data:

Product Type:	Primary Antibodies
Clone Name:	R07-9E2
Applications:	WB
Recommended Dilution:	WB: 1/1000-1/5000
Reactivity:	Human
Host:	Rabbit
Isotype:	IgG
Clonality:	Monoclonal
Immunogen:	A synthetic peptide of human Nuf2
Formulation:	50mM Tris-Glycine(pH 7.4), 0.15M NaCl, 40% Glycerol, 0.01% Sodium azide and 0.05% BSA
Concentration:	lot specific
Purification:	Affinity Purified
Conjugation:	Unconjugated
Storage:	Store at 4°C short term. Aliquot and store at -20°C long term. Avoid freeze/thaw cycles.
Stability:	1 year
Predicted Protein Size:	Calculated MW: 54 kDa; Observed MW: 54 kDa
Database Link:	<a href="#">Q9BZD4</a>
Background:	Swiss-Prot Acc.Q9BZD4.Acts as a component of the essential kinetochore-associated NDC80 complex, which is required for chromosome segregation and spindle checkpoint activity (PubMed:12438418, PubMed:14654001, PubMed:15062103, PubMed:15235793, PubMed:15239953, PubMed:15548592, PubMed:17535814). Required for kinetochore integrity and the organization of stable microtubule binding sites in the outer plate of the kinetochore (PubMed:15548592). The NDC80 complex synergistically enhances the affinity of the SKA1 complex for microtubules and may allow the NDC80 complex to track depolymerizing microtubules (PubMed:23085020).


[View online »](#)

## Product images:



Western blot analysis of Nuf2 in K562 lysates using Nuf2 antibody.