

Product datasheet for **TA384902S**

MTH1 (NUDT1) Rabbit Monoclonal Antibody [Clone ID: R06-2K9]

Product data:

Product Type:	Primary Antibodies
Clone Name:	R06-2K9
Applications:	IF, IP, WB
Recommended Dilution:	WB: 1/2000 ICC/IF: 1/100 IP: 1/20
Reactivity:	Human
Host:	Rabbit
Isotype:	IgG
Clonality:	Monoclonal
Immunogen:	Recombinant protein of human MTH1
Formulation:	50mM Tris-Glycine(pH 7.4), 0.15M NaCl, 40% Glycerol, 0.01% Sodium azide and 0.05% BSA
Concentration:	lot specific
Purification:	Affinity Purified
Conjugation:	Unconjugated
Storage:	Store at 4°C short term. Aliquot and store at -20°C long term. Avoid freeze/thaw cycles.
Stability:	1 year
Predicted Protein Size:	Calculated MW: 23 kDa; Observed MW: 18 kDa
Gene Name:	nudix hydrolase 1
Database Link:	Entrez Gene 4521 Human P36639



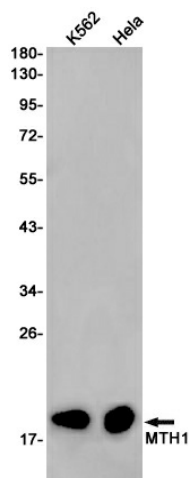
[View online »](#)

Background:

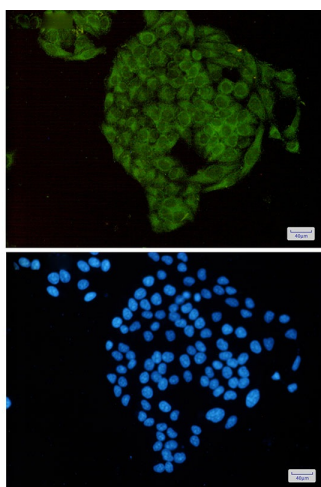
Swiss-Prot Acc.P36639.Antimutagenic (PubMed:8226881, PubMed:7713500, PubMed:10608900). Plays a redundant role in sanitizing oxidized nucleotide pools, such as 8-oxo-dGTP pools (PubMed:28679043). Acts as a sanitizing enzyme for oxidized nucleotide pools, thus suppressing cell dysfunction and death induced by oxidative stress (PubMed:12857738, PubMed:24695224, PubMed:24695225). Hydrolyzes 8-oxo-dGTP, 8-oxo-dATP and 2-OH-dATP, thus preventing misincorporation of oxidized purine nucleoside triphosphates into DNA and subsequently preventing A:T to C:G and G:C to T:A transversions (PubMed:8226881, PubMed:10373420, PubMed:10608900, PubMed:11756418, PubMed:12857738, PubMed:16607562, PubMed:24695224, PubMed:24695225, PubMed:26999531, PubMed:28035004). Able to hydrolyze also the corresponding ribonucleotides, 2-OH-ATP, 8-oxo-GTP and 8-oxo-ATP (PubMed:10373420, PubMed:11139615). Does not play a role in U8 snoRNA decapping activity. Binds U8 snoRNA .

Synonyms:

8-oxo-dGTPase; MTH1; OTTHUMP00000115537; OTTHUMP00000115540

Product images:

Western blot analysis of MTH1 in K562, HeLa lysates using MTH1 antibody.



Immunocytochemistry analysis of MTH1(green) in HeLa using MTH1 antibody, and DAPI(blue)